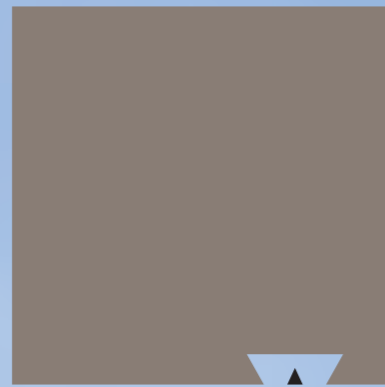


# CORPORATE PROFILE

Tokyo Big Sight Inc.



**TOKYO BIG SIGHT**

**Tokyo Big Sight Inc.**

3-11-1 Ariake, Koto-ku, Tokyo 135-0063 Japan

TEL: +81-3-5530-1111 (main line)

FAX: +81-3-5530-1222

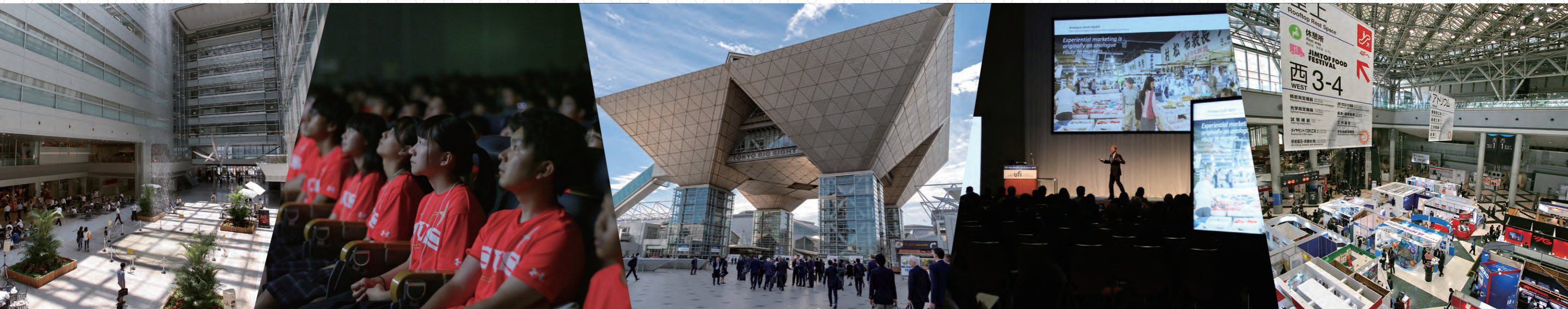
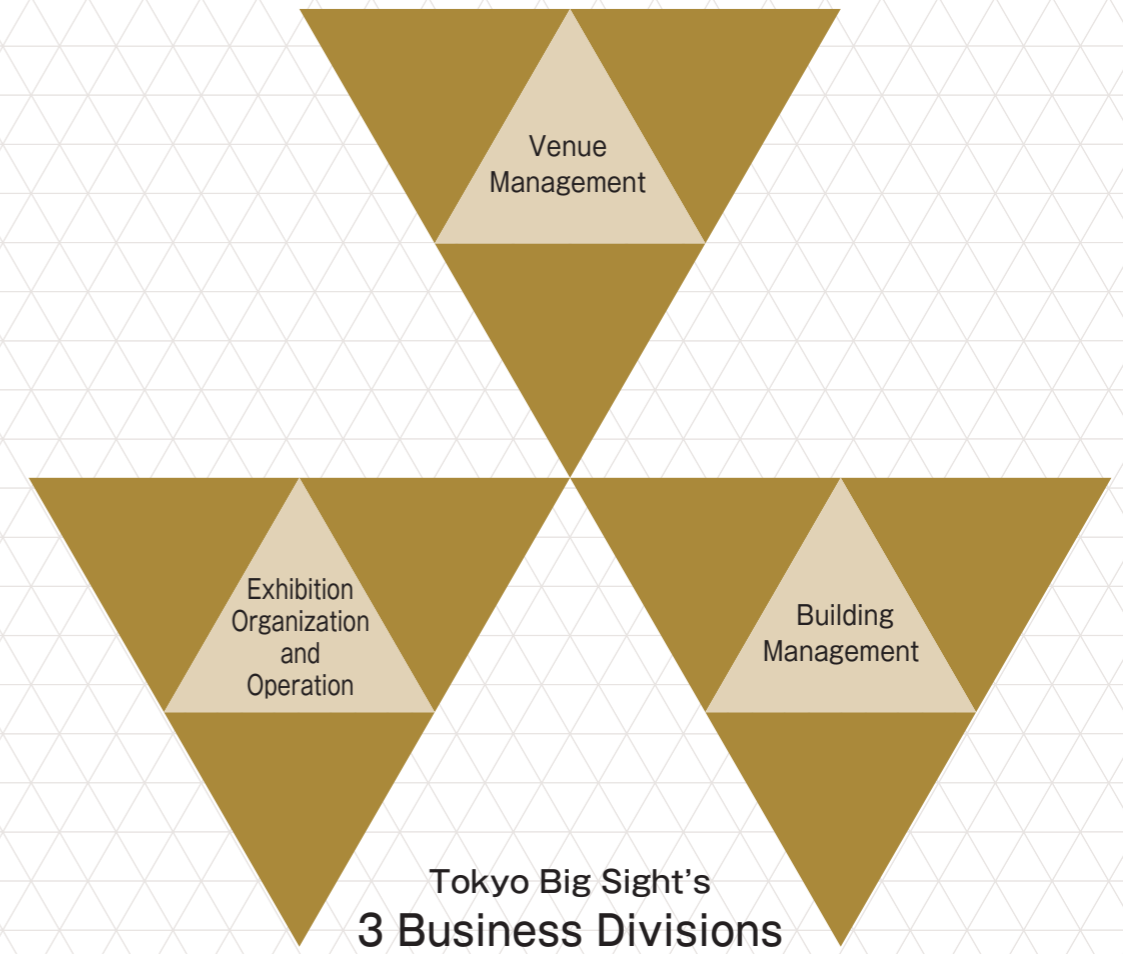
<https://www.bigsight.jp/english/>

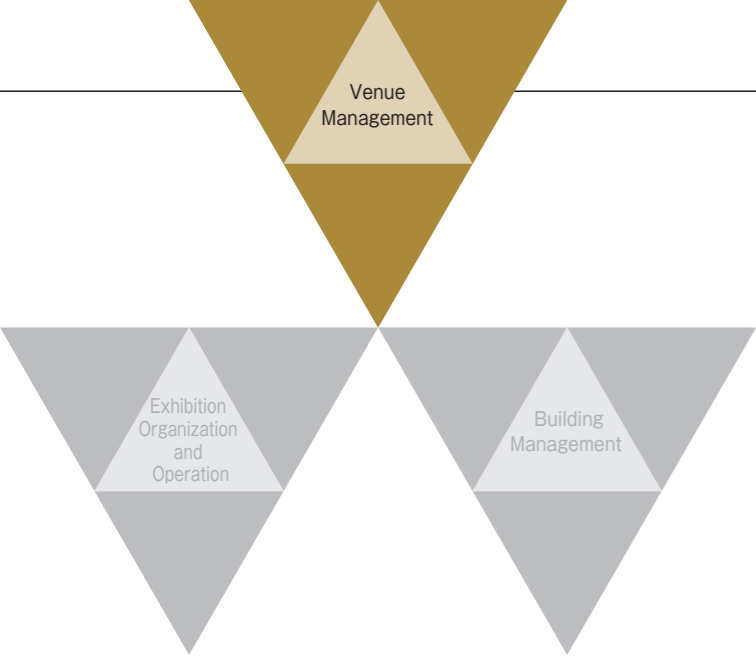


# “Encounter” and “Excitement” to open up a new future

Tokyo Big Sight Inc. delivers topnotch hardware, software and mindset through continuous innovation.

In addition to creating encounters and excitement which open up new possibilities for the future, we contribute to society by playing a role in regional development.





## Providing the best stage Services from the Customer's Point of View

We are engaged in the management and operation of Tokyo Big Sight, the largest international exhibition venue in Japan, and Ariake GYM-EX (opening in 2023), a legacy facility of the Tokyo Olympics. By providing safe, secure, and comfortable venue management in combination with our knowledge of exhibition organizing, we support the success of your exhibition or other event through our detail-oriented services.



## Initiatives for Safety, Reliable and Comfort

At Tokyo Big Sight, we carry out environment creation initiatives to ensure that all visitors at our events can spend their time in safety, security, and comfort.

### Safety

With "each employee protects our customers" as our motto, we implement comprehensive fire drills three times a year and security training for security officers, in accordance with legislation and other criteria. Tokyo Big Sight features a Security Center and Disaster Prevention Center on the premises to ensure visitor safety around the clock.

### Reliable

There are guide signs to help first-time visitors get around, moving sidewalks, textured paved blocks, and more to ensure the comfort and convenience of visitors.

### Comfort

In addition to a wide variety of restaurants and various stores such as the "Visitor & Business Center" that provides a variety of services to support venue users, we provide an environment for comfortable use of the venue, such as a free Wi-Fi service that allows you to connect anywhere in the venue.

## Improving Customer Satisfaction

With the goal of further improving convenience, we are implementing regular customer satisfaction (CS) surveys for both event organizers and visitors. The precious feedback provided by these customers is shared with various supervising departments which in turn carry out initiatives for improving the venue environment and the services we provide.

## Comprehensive Support for Organizing Exhibitions

Leveraging our knowledge of venue management and exhibition organizing, we provide support to organizers with detail-oriented services to ensure a successful exhibition or other event. In addition, we provide organizers services tailored to current needs.

## Tokyo Big Sight

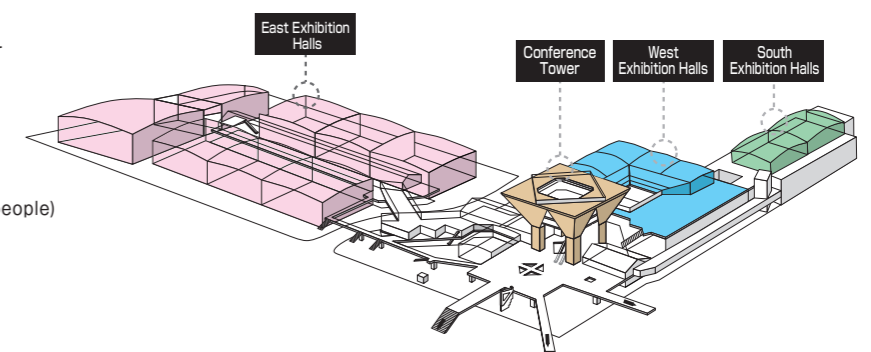
### Japan's Largest Exhibition Venue

This facility is made up of a total of 16 exhibition halls separated into 3 buildings (East, West, and South), with a total area of 115,420m<sup>2</sup>, making it the largest exhibition venue in Japan. In addition, the international conference hall can accommodate groups of up to 1,000 and there are a total of 22 other meeting rooms and reception halls available for groups as small as 10 people to as large as 500 which can be used for a variety of different purposes. Accordingly, the Tokyo Big Sight venue can be used to host a diverse variety of events.

**Official name :** Tokyo International Exhibition Center

**Exhibition facilities :** Indoor exhibition area (3 buildings, 16 halls) (Total exhibition area: 115,420 m<sup>2</sup>)

**Convention facilities :** Convention facilities: International Conference Hall (capacity of 1,000 people) Reception Hall (1,700 m<sup>2</sup>) Meeting rooms: 22 rooms (ranging from 35 m<sup>2</sup> to 760 m<sup>2</sup>)



## Ariake GYM-EX NEW

### New Exhibition Hall in the Ariake North District (opened May 18, 2023)

As a means of reusing the Ariake Gymnastics Centre used in the 2020 Tokyo Olympic and Paralympic Games, the Tokyo Metropolitan Government established this exhibition hall with approximately 9,400 m<sup>2</sup> of total exhibition space to promote the prosperity of small and medium-sized enterprises in Tokyo. The nickname chosen for the facility is "Ariake GYM-EX" which combines the location (Ariake) with an expression of the sport it was used for (GYMnastics) and its current role (EXHibition hall).



Venue  
ManagementExhibition  
Organization  
and  
OperationBuilding  
Management

We take the initiative to produce projects that open up new possibilities for the future.

In the exhibition industry, satisfying the needs of the new age requires development of bold new ideas. We propose exhibitions that move ahead of the times to open up tomorrow, based on our visions of the future and sensitivity to the latest trends, to provide the opportunities of effective business matchings for exhibitors and visitors.



## Exhibition Organization Business

### JIMTOF (Japan International Machine Tool Fair)

This event is one of the world's largest exhibitions and introduces state-of-the-art machine tools and related equipment earlier than any other exhibition in the industry. It is widely acclaimed as a large-scale show like EMO in Europe, IMTS in America, and CIMT in China. JIMTOF has a history of over fifty years since it was first held in Osaka in 1962.

EMO: Exposition Mondiale de la Machine Outil  
IMTS: International Manufacturing Technology Show  
CIMT: China International Machine Tool Show

### Japan International Aerospace Exhibition (JA)

This event showcases the latest products and technologies by top aerospace companies from around Japan and the world. It is jointly hosted with the Society of Japanese Aerospace Companies. The object of the exhibition is to contribute to the promotion of industries relating to aerospace.

### Tokyo International Fire and Safety Exhibition

This event is held once every five years for the purpose of sharing lessons on disaster risks learning from past experience, increasing awareness about fire and disaster control and improving the ability to respond to emergencies among people in Tokyo including Tokyoites. The exhibition brings together the latest fire-fighting and disaster prevention equipment and systems manufactured both in Japan and overseas to enhance cooperation among residents, companies, and local governments, and promote the development of related technologies and industries.

### Security & Safety Trade Expo (RISCON TOKYO)

This event is one of the largest comprehensive trade shows in Japan. It showcases the latest products and technologies or the like in the risk management area across three exhibition zones: Disaster Risk Reduction, Security, and BCP/Risk Management Themes. Since 2005, RISCON TOKYO has been held every year as a forum for business negotiations that lead to business development, and a base for government administrative bodies and private organizations to disseminate information.

### Special Equipment Exhibition & Conference for Anti-Terrorism (SEECAT)

This event is a specialized exhibition for anti-terrorism products and services held annually in conjunction with the Security & Safety Trade Expo. The majority of visitors are public security professionals and specialists with expertise in Japan's anti-terrorism measures. Business negotiations and information exchange are conducted at the exhibition.

### Tokyo Business Chance EXPO

The Tokyo Business Chance Expo is a comprehensive exhibition where companies in Tokyo with unique technology and products gather together to promote their products and services to attendees with the goal of developing new sales channels.

## Exhibition Operation Division

### JAPAN MOBILITY SHOW

Tokyo Big Sight Inc. is responsible for a portion of the JAPAN MOBILITY SHOW operation. We will continue to apply our expertise in site administration and exhibition hosting to assist the organizers to operate this exhibition, and use the event to help revitalize the Tokyo waterfront subcenter, create prosperity and contribute to the development of the national economy.

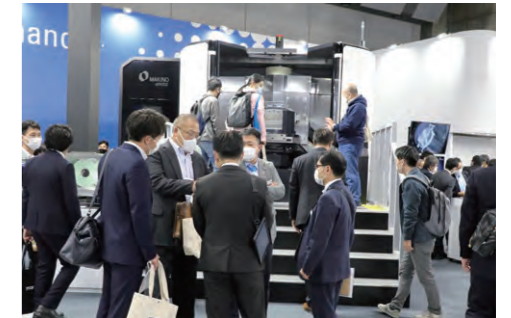
## Others

### Supporting International Expansion for Small and Medium-Sized Companies

As a cooperative project with the Tokyo Metropolitan Government, we have carried out exhibiting and management projects for international exhibitions such as the "Paris Air Show," "Singapore Air Show," and "Berlin Air Show," with the goal of supporting domestic small and medium-sized companies in cultivating new markets. In the future, we will further expand our overseas activities, promoting the mutual attraction of domestic and international companies and visitors.

### Cooperation with International Companies and Organizations

We take a multi-faceted approach to developing cooperation relationships. Through efforts such as collaboration and execution of memoranda of understanding (MOU) with exhibition venues in Asia, government agencies, and other organizations, we strive to promote mutual attraction of exhibitor and visitor and exchange of various information between groups. In addition, we have joined the Global Association of the Exhibition Industry (UFI) and are working to improve our international status.



Venue  
ManagementExhibition  
Organization  
and  
OperationBuilding  
Management

## Response to a wide variety of needs of office workers in the waterfront subcenter.

We manage three buildings in the waterfront subcenter of the Ariake and Aomi areas: the Ariake Park Building, TFT (Tokyo Fashion Town) Building, and TIME24 Building. Each building has accommodations, restaurants, medical institutions, etc., to respond to a wide variety of needs of tenants and visitors in this area.

In addition, the waterfront subcenter is resilient to disasters due to the various countermeasures being implemented, and with plans such as the full opening of a second loop line and the launch of bus rapid transit (BRT) operations. The area is expected further development in the near future.

### Ariake Park Building



The Ariake Park Building is a complex containing a hotel, offices, and commercial facilities. It features the Tokyo Bay Ariake Washington Hotel, which provides first-rate accommodations for visitors to Tokyo Big Sight and the Tokyo waterfront subcenter, and a number of fine restaurants and retail stores that cater to a variety of needs including lunch, dinner and pre- and post-event gatherings. Equipped with a parking lot for 250 cars, the Ariake Park Building serves as a landmark for visitors to Tokyo Big Sight.

Address : 3-7-11 Ariake, Koto-ku, Tokyo  
Facilities : Hotel, restaurants, shops and offices  
Ground-floor area : 9,899 m<sup>2</sup>  
Building area : 7,712 m<sup>2</sup>  
Total floor area : 70,113 m<sup>2</sup>  
Number of floors : 22 floors above ground, 3 floors below ground and a one-story penthouse

### TFT (Tokyo Fashion Town) Building



The TFT (Tokyo Fashion Town) Building is composed of two buildings, the East and West Wings. The East Wing is one of the largest buildings in Tokyo, with an area of approximately 9,900 m<sup>2</sup> on one floor. The East Wing contains a variety of stores, including restaurants, a clinic, a dentist office, a post office, and a daycare center. Centered around the second floor, these stores are used by people including office workers and visitors to Tokyo Big Sight. The building is close to Tokyo Big Sight and is easily accessible from within Tokyo, so the office floors are utilized by many tenants. From the standpoint of industrial development, the building also contains small offices for small- and medium-sized businesses. The three halls and meeting and training rooms can be used for a variety of purposes, such as seminars, exhibitions, and parties.

Address : 3-6-11 Ariake, Koto-ku, Tokyo  
Facilities : Offices, rental halls, conference and seminar rooms, restaurants and shops  
Ground-floor area : 29,541 m<sup>2</sup>  
Building area : 23,623 m<sup>2</sup>  
Total floor area : 162,720 m<sup>2</sup>  
Number of floors : East Wing (9 floors above ground, 1 floor below ground and a two-story penthouse)  
West Wing (9 floors above ground, 2 floors below ground and a one-story penthouse)

### TIME24 Building



The TIME24 Building has expansive non-columnar space running through the building enables sunlight to reach both sides on all floors, and it provides bright open work areas in addition to views of the city center and Tokyo Bay. A free shuttle bus runs along a route between Tokyo Teleport Station on the Rinkai Line and the TIME24 Building, assisting office workers with their daily commutes. The Aomi area, where this building is located, is also an active area for international exchange, with a concentration of research and support institutions for the latest technologies, such as Tokyo Metropolitan Industrial Technology Research Institute, the National Institute of Advanced Industrial Science and Technology, as well as Tokyo International Exchange Center, Tokyo International Cruise Terminal, and TOKYO GLOBAL GATEWAY (Tokyo English Village, a tenant of the TIME24 Building).

Address : 2-4-32 Aomi, Koto-ku, Tokyo  
Facilities : Offices, rental halls, conference and seminar rooms and shops  
Ground-floor area : 10,588 m<sup>2</sup>  
Building area : 4,989 m<sup>2</sup>  
Total floor area : 66,485 m<sup>2</sup>  
Number of floors : 19 floors above ground, 1 floor below ground and a two-story penthouse

### Improvement of Tenant Services

Through regular customer satisfaction (CS) surveys implemented for office employees, we maintain an understanding of their needs, and this information serves as the basis for the services and facility installations we implement. In addition, we proactively carry out initiatives for the improvement of convenience and satisfaction among these employees through efforts such as the implementation of seasonal decorations and events.

### Generating Prosperity in the Waterfront Subcenter

In cooperation with other Ariake South area businesses, we launched the "Club Ariake" area management liaison in 2014, and currently serve as the executive office. Through initiatives such as hosting various events, we strive to improve satisfaction among people working and studying in Ariake South area while also contributing to increasing the area's appeal.

# What Tokyo Big Sight Can Do for a Sustainable Society

We formulated our CSR Basic Policy to detail our basic principle of fulfilling social responsibilities primarily through our business activities.

Based on this policy, we will engage in business activities while maintaining good relations with our stakeholders and contributes to achieving related SDGs and raising awareness among our employees about them.

## Basic Principle of CSR Basic Policy

According to our management concept of "Contributing to society by promoting economic activities and regional development," we at Tokyo Big Sight Inc. are active primarily in business involving exhibition venues and buildings to fulfill our social responsibilities as good corporate citizens.



## 1 Creating Safe, Secure, Comfortable Environments



Tokyo Big Sight builds safe, secure, and comfortable environments by maintaining and strengthening our risk management system, including measures against large-scale disasters and infectious diseases, as well as providing facilities and services that take into account the needs of various visitors.

### Development of a Safe and Secure Environment

At Tokyo Big Sight, we are developing the environment of our facilities with the aim of improving convenience for all users, including free Wi-Fi, barrier-free toilets, a prayer room, baby care rooms, and wheelchair rentals.



### Large-Scale Disaster Countermeasures

We have carried out preparations to enable Tokyo Big Sight and the three buildings we own and manage to accept individuals unable to return to their homes in the event of a large-scale disaster and provide temporary shelter.



## 2 Environmental Conservation and Sustainable Business Practices



Tokyo Big Sight contributes to the realization of a sustainable society by promoting activities that take into account environmental conservation and sustainability while pursuing our businesses such as management of facilities and exhibitions.

### CO<sub>2</sub> Reduction

We are carrying out CO<sub>2</sub> emission reduction initiatives such as conversion of indoor venue lighting to LED bulbs and greening of walls and rooftops.



### Renewable Energy

We are promoting the use of renewable energy through initiatives such as the installation of solar panels on the roof of the South Exhibition Building and use of the generated power within the venue.



### Reduction of Waste and Effective Utilization of Resources

In addition to the reuse of exhibition decoration materials which we have been implementing for some time, we are also carrying out other initiatives for reduction of waste and effective utilization of resources such as conversion of food waste products from venue restaurants into livestock feed and usage of accumulated rainwater.

## 3 Contributing to the Development of Local Communities



Tokyo Big Sight is contributing to improved value and further development of the Tokyo waterfront subcenter through our various business activities; specifically, we are creating lively communities, working in collaboration with nearby businesses, and improving the appeal of the community.

### Participation in the Tokyo Waterfront City Association

In cooperation with neighboring businesses, we carry out a variety of activities such as joint disaster training, scenery beautification such as trash pickups and flower planting, and awareness color illuminations.



### Tokyo International Projection Mapping Award

We support this award as a way to discover young spatial video creators and enhance the liveliness of the Ariake area.



## 4 Strong and Sound Organizational Structure



Tokyo Big Sight engages in business with a high sense of ethics and awareness of risks, seeking to develop environments where human resources are respected and individuals can fully put their abilities to use, with the aim of building a sound, solid, and resilient organizational structure.

### Compliance

We have established a compliance committee to conduct internal audits on accounts, finances, and service.

### Promoting a work-life balance

We support diverse lifestyles through flexible working hours including staggered shifts, and providing a full range of childcare and family care programs.

## Outline

Name: Tokyo Big Sight Inc.  
 Address: 3-11-1 Ariake, Koto-Ku, Tokyo  
 Date of establishment: April 1, 1958  
 Capital: ¥5,571 million  
 Number of employees: 112

## Management Concept

Contribute to society by promoting economic activities and regional development.

## Management Policy

To establish the “Tokyo Big Sight” brand  
 Through continuous innovation, we deliver high-quality hardware, software and experiences.

## Executive Officers

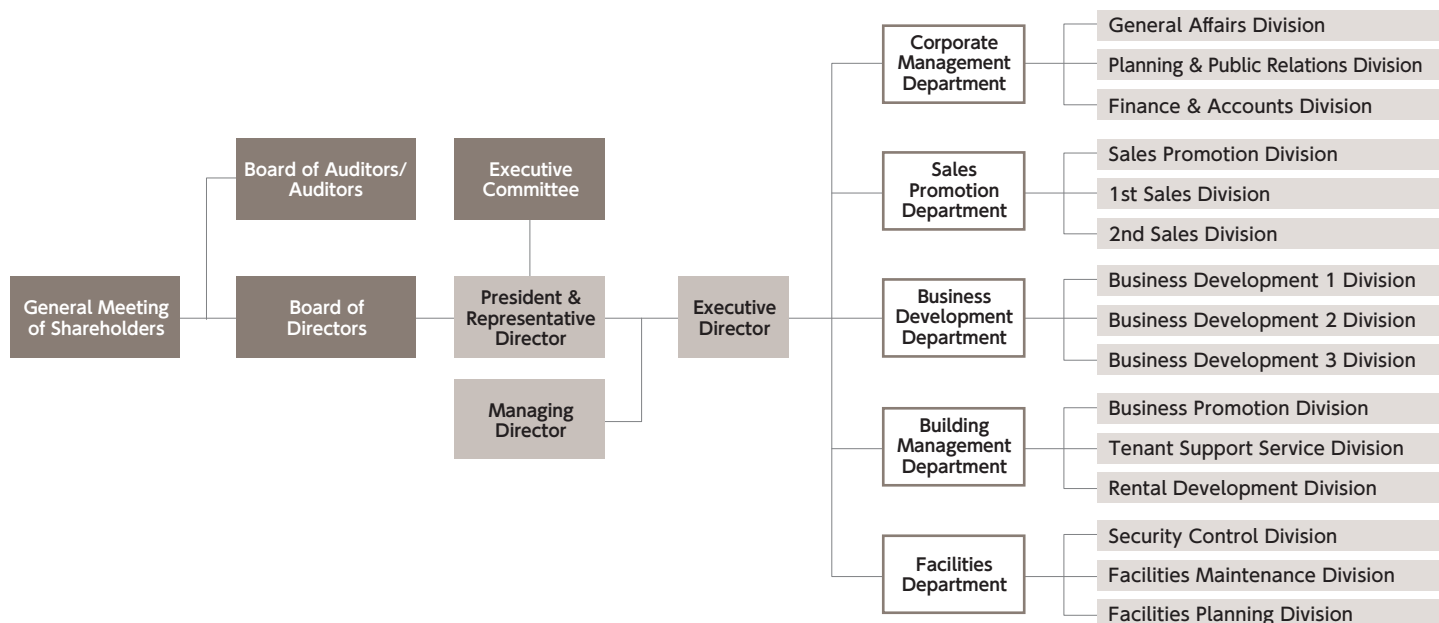
(As of June 29, 2023)

|   |                    |
|---|--------------------|
| President & CEO<br><small>(Former Director General of the Bureau of Sewerage of Tokyo Metropolitan Government)</small>    | Kiyotsugu Ishihara |
| Executive Vice President & CEO<br><small>(Former Director of the Transportation Bureau of the Tokyo Metropolitan)</small> | Yasuo Tsukuni      |
| Executive Managing Director   | Uematsu Ryosuke    |
| Member of the Board   | Haruhiko Kobayashi |
| Member of the Board   | Masahiko Sakamoto  |

|                     |                  |
|---------------------|------------------|
| Member of the Board | Kazuo Minami     |
| Member of the Board | Yoshikazu Miyata |
| Auditor (full time) | Kenji Yamauchi   |
| Auditor             | Seiya Shimaoka   |
| Auditor             | Takashi Utagawa  |
| Auditor             | Hirofumi Yatabe  |

## Corporate Structure

(As of April 1, 2023)



## Business Activities

- Management and operation of venues at Tokyo Big Sight (Tokyo International Exhibition Center)
- Organization and operation of trade fairs and exhibitions
- Management and operation of Ariake Park Building, TFT Building, and TIME24 Building
- Management and operation of the venue at Ariake GYM-EX (Ariake Exhibition Hall)

## Action Standards

Let's create "The Encounter of a Lifetime" with a sophisticated flair!

1. "Visitor's Point of View" and "Sense of Speed" are the underlying themes of our services.
2. "Safety," "Reliability" and "Comfort" are the keywords in creating an environment that supports "The Encounter of a Lifetime."
3. We actively develop exhibitions that open up "New Business for Tomorrow."
4. We operate our organization through "Precise Understanding of the Current Situation," "Carrying out Bold Projects," "Action Supported by Organizing Power," and "Verification of Cost-Effectiveness."
5. Our operations are in full compliance with laws and regulations.

## Business Overview

(FY2022)

In FY2022, various restrictions related to the COVID-19 pandemic were loosened, event hosting and the reopening of Japan for entry and exit by foreign nationals progressed, and it was a year with expectations for economic recovery. In the MICE industry as well, alongside new event formats such as online and hybrid event, face-to-face conferences and exhibitions were held, and these events began to regain their liveliness as places for people to meet.

In the Venue Operation Business, the South Exhibition Halls were opened as event venues in July 2019. Afterward, they have been in full-scale operation as an event space with a total exhibition area of approximately 116,000 m<sup>2</sup> since December 2021 following restricted usage during the 2020 Tokyo Olympic and Paralympic Games.

In the Exhibition organization Business, the Japan International Machine Tool Fair held for the first time in four years (JIMTOF 2022) was on the largest scale this event has ever achieved. In addition, we were also involved in the hosting of other events such as Security & Safety Trade Expo (RISCON TOKYO 2022) and the Tokyo Business Chance Expo.

In the Building Management Business, we increased opportunities for communication with resident tenants, strengthening relationships, and striving to understand and handle their needs. These efforts contributed to improved satisfaction rates. We also aimed for maintenance and improvement of occupancy rates and made efforts to provide flexible services in order to secure new tenants.

## ■ Information on Profit / Loss and Property

| Category                         | 79th Period<br>FY2019 | 80th Period<br>FY2020 | 81th Period<br>FY2021 | 82th Period<br>FY2022<br>(fiscal year under review) |
|----------------------------------|-----------------------|-----------------------|-----------------------|---|
| Operating revenue (thousand yen) | 20,953,419            | 14,682,969            | 17,962,636            | 20,354,818  |
| Ordinary profit (thousand yen)   | 2,649,449             | -441,449              | 1,833,580             | 1,493,423   |
| Profit (thousand yen)            | 1,841,524             | -254,777              | 1,214,789             | -682,734  |
| Earnings per share (yen)         | 724                   | -100                  | 478                   | -268  |
| Total assets (thousand yen)      | 83,546,303            | 78,662,299            | 82,633,237            | 79,458,677  |
| Net assets (thousand yen)        | 64,853,477            | 64,497,099            | 65,610,288            | 64,825,953  |

Note: Earnings (loss) per share is calculated based on the average total number of issued shares during the period, with the average number of shares of treasury stock during the period excluded.

## History

|              |   |
|--------------|---|
| March 1956   | The Tokyo International Trade Fair Commission was established to host the Tokyo International Trade Fairs and other various trade fairs     |
| April 1958   | Tokyo International Trade Center Corp. was established to operate the Harumi Fairgrounds  |
| March 1996   | Harumi Fairgrounds were closed  |
| April 1996   | Tokyo Big Sight was inaugurated   |
| May 1999     | Tokyo International Trade Center Corp. completed the construction and commenced management and operation of the Ariake Park Building        |
| April 2000   | Tokyo International Trade Center Corp. integrated business with TOKYO FASHION TOWN CORPORATION and TIME 24 CO., LTD.                        |
| April 2003   | Tokyo International Trade Center Corp. merged with Tokyo International Trade Fair Commission and changed its name to "Tokyo Big Sight Inc." |
| March 2006   | Tokyo Big Sight Inc. completed the acquisition of TOKYO FASHION TOWN CORPORATION and TIME 24 CO., LTD.                                      |
| January 2009 | Tokyo Big Sight Inc. participated in Rinkai Holdings Group  |
| October 2016 | Completed the construction of the New East Exhibition Halls (East Hall 7 and East Hall 8) and launched operations                           |
| March 2019   | Completed the construction of the Aomi Exhibition Halls (A Hall and B Hall) (operations terminated in December 2021)                        |
| June 2019    | Completed the construction of the South Exhibition Halls (South Hall 1 to South Hall 4) and launched operations in July                     |
| May 2023     | Opened Ariake GYM-EX (Ariake Exhibition Hall) reusing as the Ariake Gymnastics Centre which was used for the 2020 Tokyo Olympic Games       |