

VENUE GUIDE

Tokyo Big Sight



TOKYO BIG SIGHT

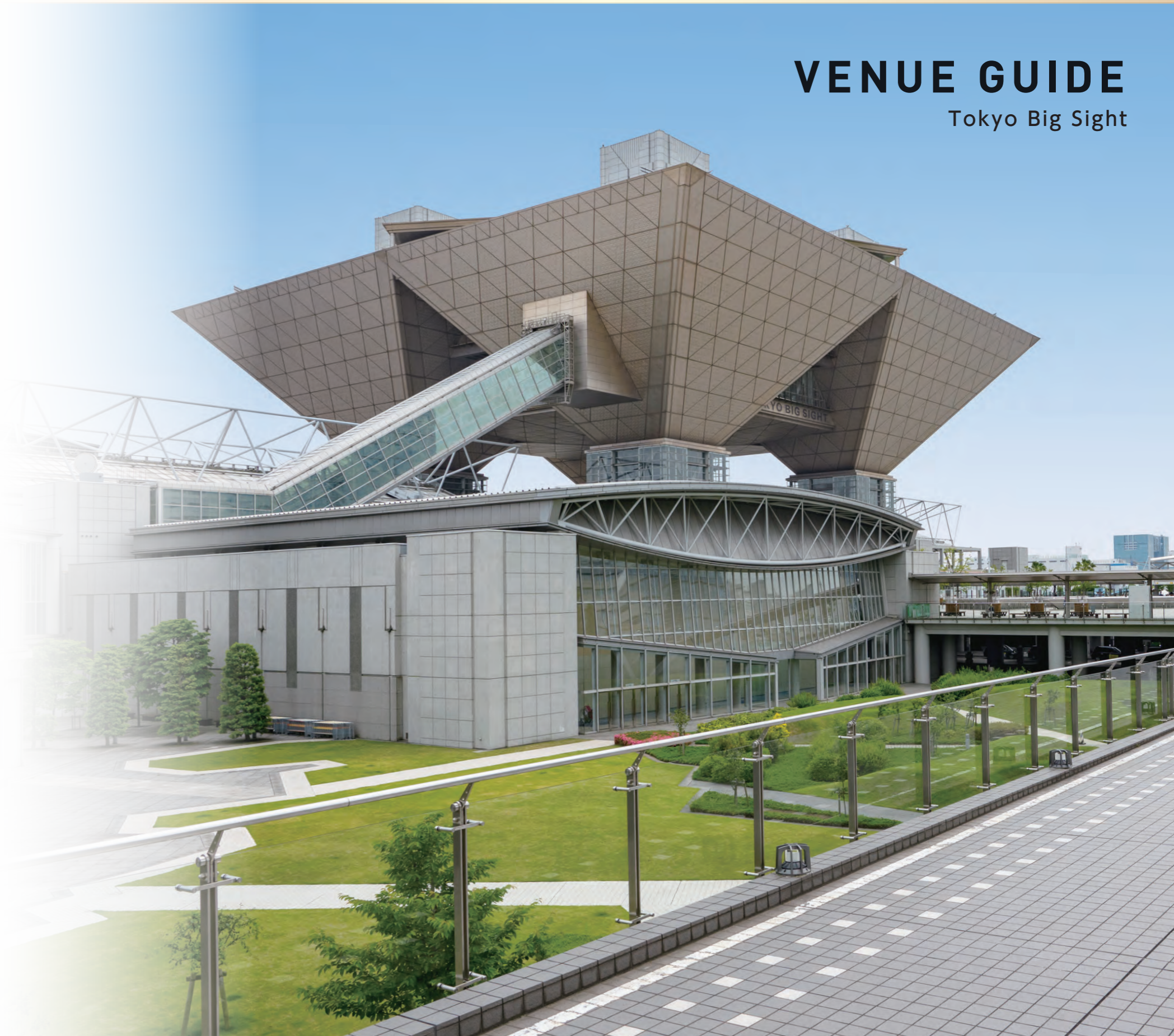
Tokyo Big Sight Inc.

3-11-1 Ariake, Koto-ku, Tokyo 135-0063 Japan

TEL: +81-3-5530-1111 (main line)

FAX: +81-3-5530-1222

<https://www.bigsight.jp/english/>



A “world stage,” stirring heartfelt feelings and promising exciting encounters.

An abundance of opportunities materialize at Tokyo Big Sight. Our motto is to provide a safe, reliable, and comfortable environment, and service that responds to the trust placed in us. We ensure the success of your exhibition or event by promising visitors exciting encounters.



Excitement Creation Space

Attractions of the Tokyo Big Sight

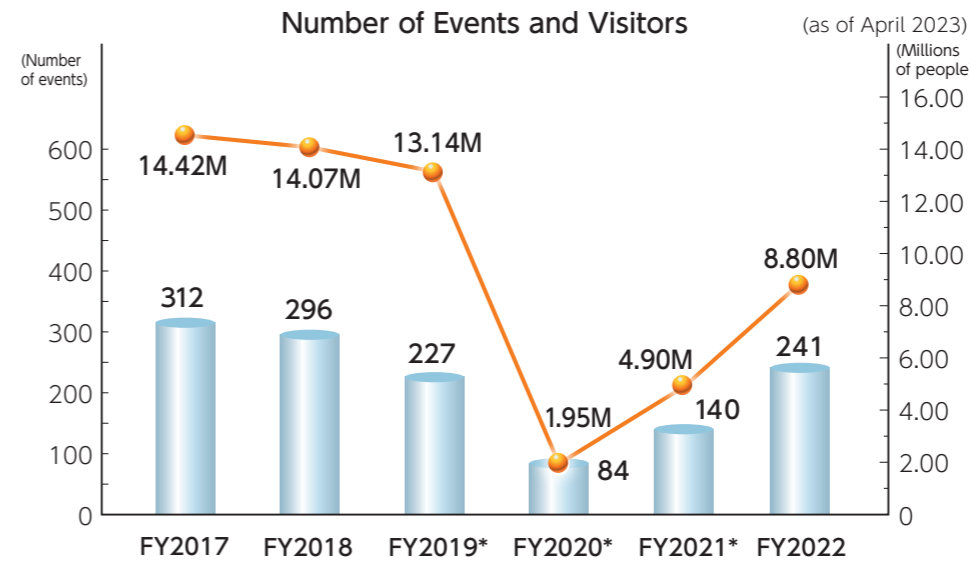
Tokyo Big Sight's 3 big advantages

- ### 1 Japan's Largest Exhibition Halls and Conference Rooms

Tokyo Big Sight boasts of Japan's largest exhibition area. The East Exhibition Halls, the West Exhibition Halls, and the South Exhibition Halls with a total floor space of 115,420 square meters, are engineered to support a broad range of exhibitions and events. Conference rooms are linked effectively to the Exhibition halls. You can select rooms by size to fit your specific conference or meeting requirements.
- ### 2 Management Support System Provides Dependability and Performance

After opening its doors in 1996, Tokyo Big Sight has built up a history and track record of management support for numerous trade fairs and exhibitions. This dependable support system, fostered over many years, is a critical factor behind the success of the exhibitions staged here.
- ### 3 Premier Location in Tokyo, Capital of Japan

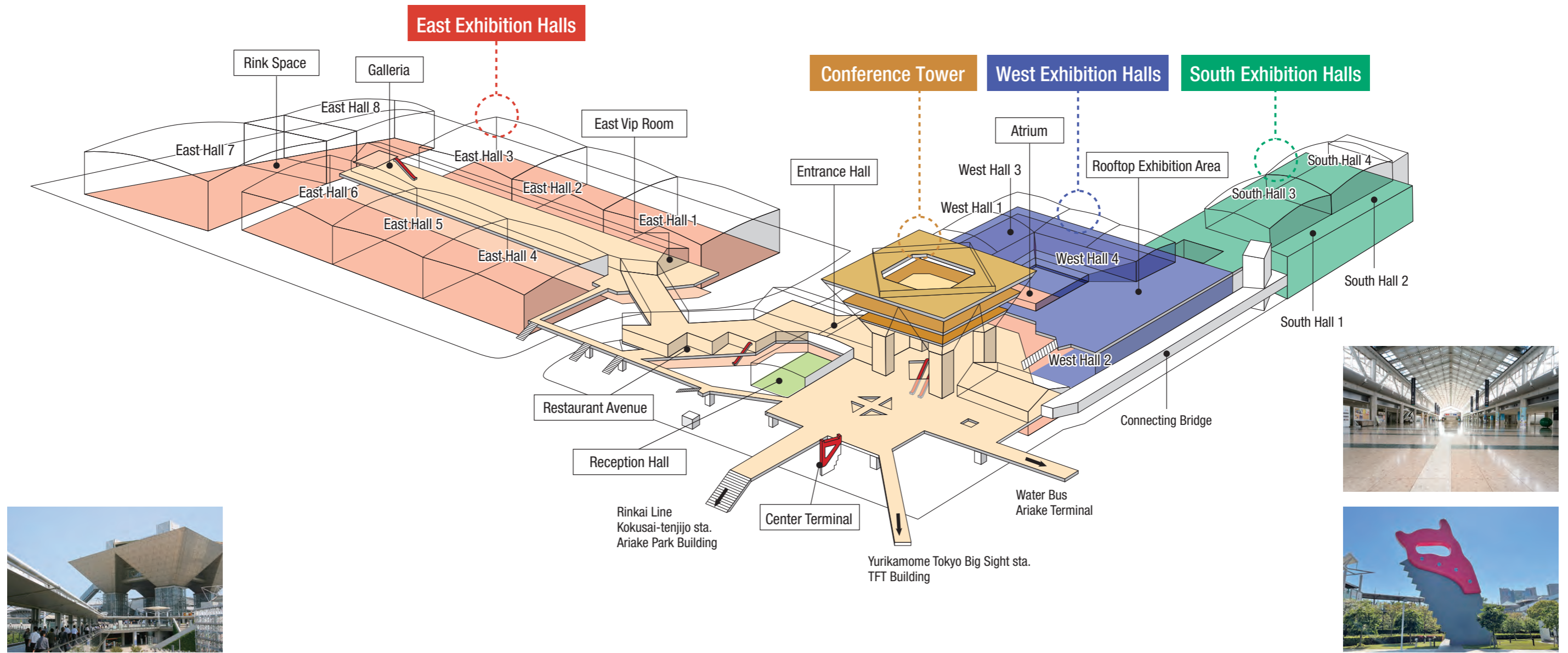
Tokyo Big Sight is located in the Ariake part of the Rinkai Fukutoshin area along Tokyo Bay and near the center of Tokyo. Visitors can access Tokyo Big Sight readily from Tokyo and its surrounding cities, from other parts of Japan, and from overseas.



Notes: 1. The number of events, etc., excludes simultaneous exhibitions held by the same organizer.
 2. The number of visitors is the number from equipment that count the number of visitors at our facility.
 * Includes periods of restricted use in conjunction with the state of emergency declared by the Japanese government and the 2020 Tokyo Olympic Games.

Outline of Tokyo Big Sight

Official name	Tokyo International Exhibition Center
Ground-floor area	265,751 m ²
Building area	185,348 m ²
Total floor area	316,990 m ²
Number of floors	8 floors above ground, 1 floor below ground
Completed	October 1995
Opened	April 1996
Exhibition facilities	Indoor exhibition area, 16 halls in 3 buildings (Total area 115,420 m ²) Rooftop exhibition area (6,000 m ²)
Convention facilities	International conference room (capacity of 1,000 seats) Reception hall (1,700 m ²) 22 meeting rooms (35 m ² to 760 m ²)
Service facilities	Restaurants, convenience stores, Visitor and Business Center, ATMs, etc.



Large-scale Venue Supports All Types of Events

The East Exhibition Halls, which occupies the largest area in Tokyo Big Sight, consist of eight halls. East Halls 1 to 6 respectively has a 90 m x 90 m floor area, and three of them are lined on either side of the two-layered Galleria main walkway. It is also possible to connect two or three of the halls together by removing the movable partitions and to create a total floor area of 25,000 m². In addition, the ceiling is 31 m high (at the highest point), meaning that large-scale exhibits can be carried inside. East Halls 7 and 8, which were newly opened in 2016, are connected through the "Link Space" that serves as a multipurpose area. East Hall 7 with a floor area of 11,680 m² is the largest hall in the facility. The Galleria walkway, a comfortable open ceiling space has a glass ceiling that lets in natural light. The space is also equipped with a moving walkway, so that visitors can easily traverse the expansive floor space where restaurants and cafeterias are lined on both sides.



View of Exhibition

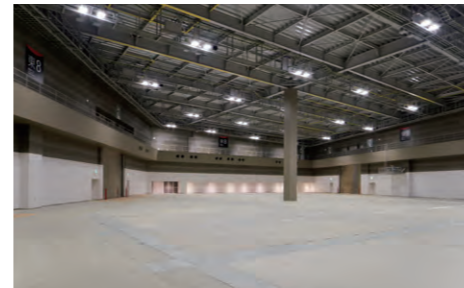
Floor Plan



● East Hall 7



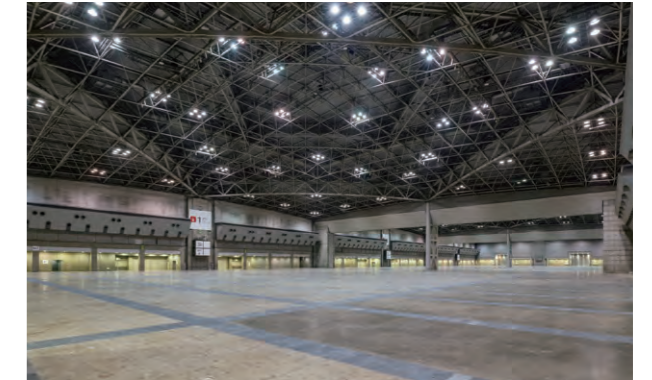
● East Hall 8



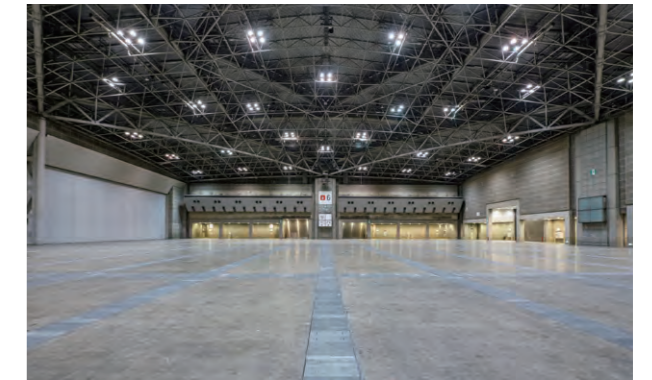
● Link Space



● East Hall 1-3



● East Hall 6



● Galleria



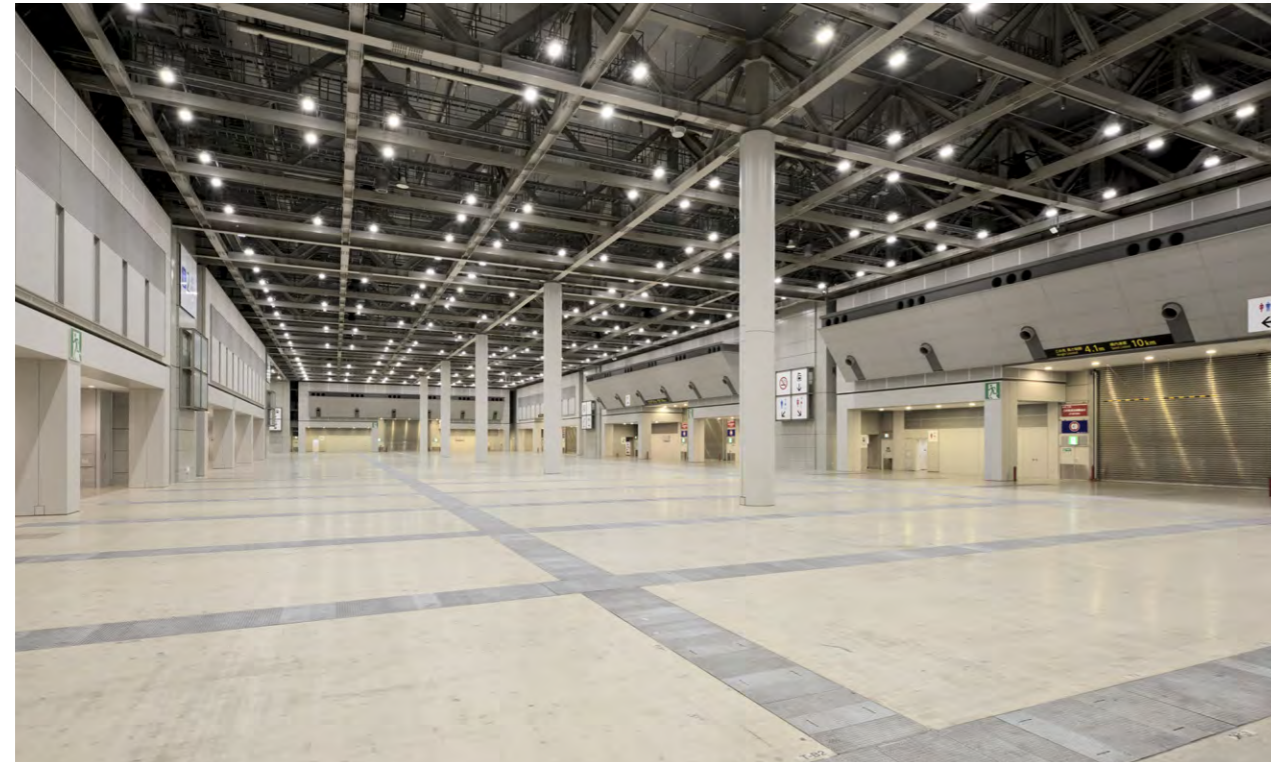
East Exhibition Halls Data

Name	East Hall 1	East Hall 2	East Hall 3	East Hall 4	East Hall 5	East Hall 6	East Hall 7	East Hall 8	Link Space
Floor Area	8,670 m ²	8,350 m ²	8,670 m ²	8,670 m ²	8,350 m ²	8,670 m ²	11,680 m ²	3,080 m ²	1,120 m ²
Ceiling Height	17 m (lowest point) 31 m (highest point)	17 m (lowest point) 31 m (highest point)	17 m (lowest point) 31 m (highest point)	17 m (lowest point) 31 m (highest point)	17 m (lowest point) 31 m (highest point)	17 m (lowest point) 31 m (highest point)	12 m (lowest point) 13 m (highest point)	10 m (lowest point) 12 m (highest point)	10 m (lowest point) 12 m (highest point)
Floor Load	5 t/m ²	5 t/m ²	5 t/m ²	5 t/m ²	5 t/m ²	5 t/m ²	5 t/m ²	5 t/m ²	5 t/m ²
Freight Entrance/Exit	4	2	4	4	2	4	4	2	From East Hall 7,8
Equipment in the Hall	Broadcasting Equipment, Air Conditioning Equipment, Disaster Prevention Tools, etc.								
Equipment inside the Pit	Tools for Electricity, A Water Supply and Drainage System, Optical High-Speed Broadband Communication Lines (B-Flets)			Gas, Communication Devices, ADSL Connection)			Tools for Electricity, A Water Supply and Drainage System, Compressor, Gas, Communication Devices		Tools for Electricity, A Water Supply and Drainage System, Compressor, Communication Devices,
Auxiliary Facilities	Organizer's Office, Meeting Room, Dressing Room, Kitchenette, First			Aid Room, East VIP Room, etc.			Organizer's Office, Meeting Room		—

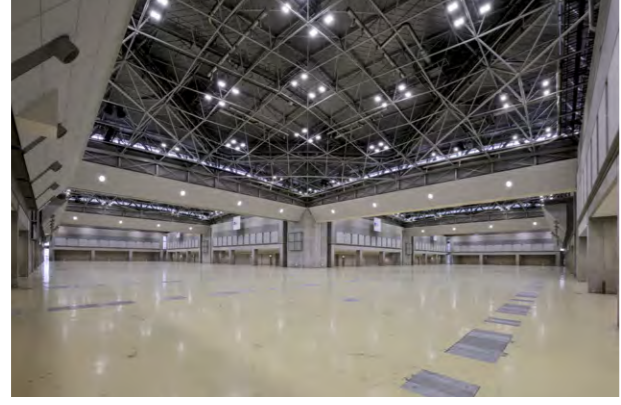
Highly Functional and Diverse Exhibition Space

The West Exhibition Halls consist of a two-layered exhibition hall surrounding the Atrium, which is a dynamic high-ceiling space. Two exhibition halls are located around the base of the Atrium on the first floor. The fourth floor has two medium sized exhibition halls surrounding the top of the Atrium cut out, and a Rooftop exhibition area.

● West Hall 2



● West Halls 3-4



● Rooftop Exhibition Area



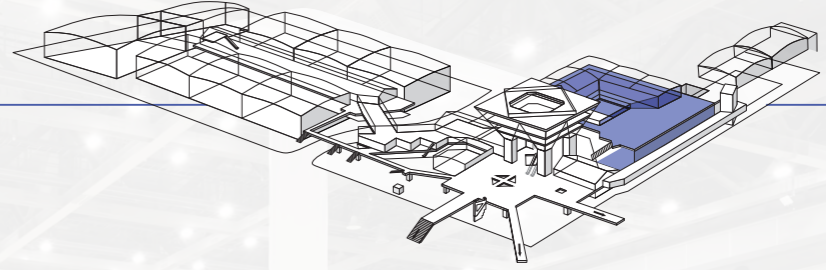
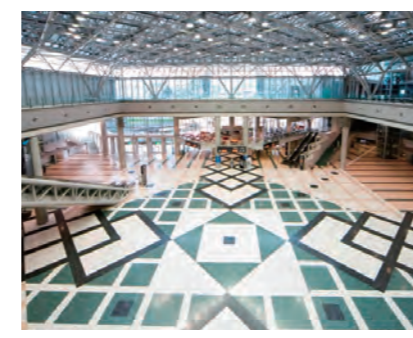
● View of Exhibition (West Hall 4)



● View of Exhibition (Atrium)

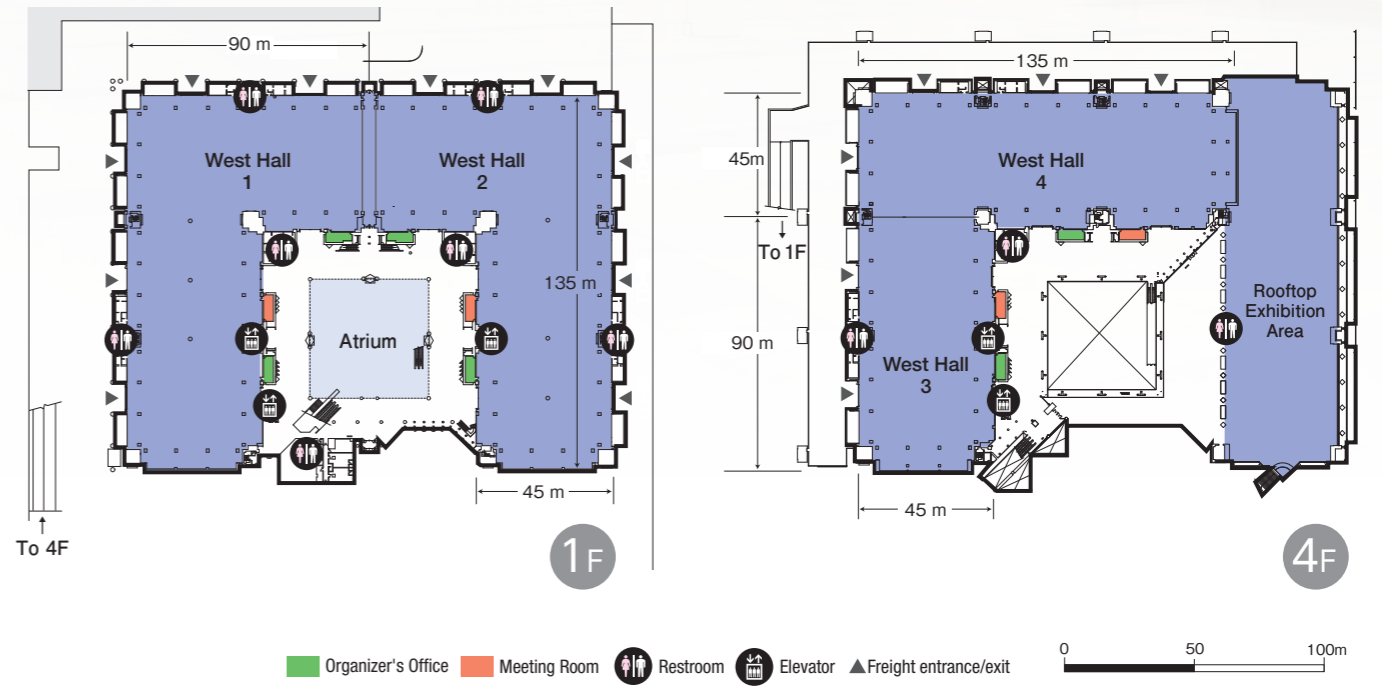


● Atrium



West Exhibition Halls

■ Floor Plan



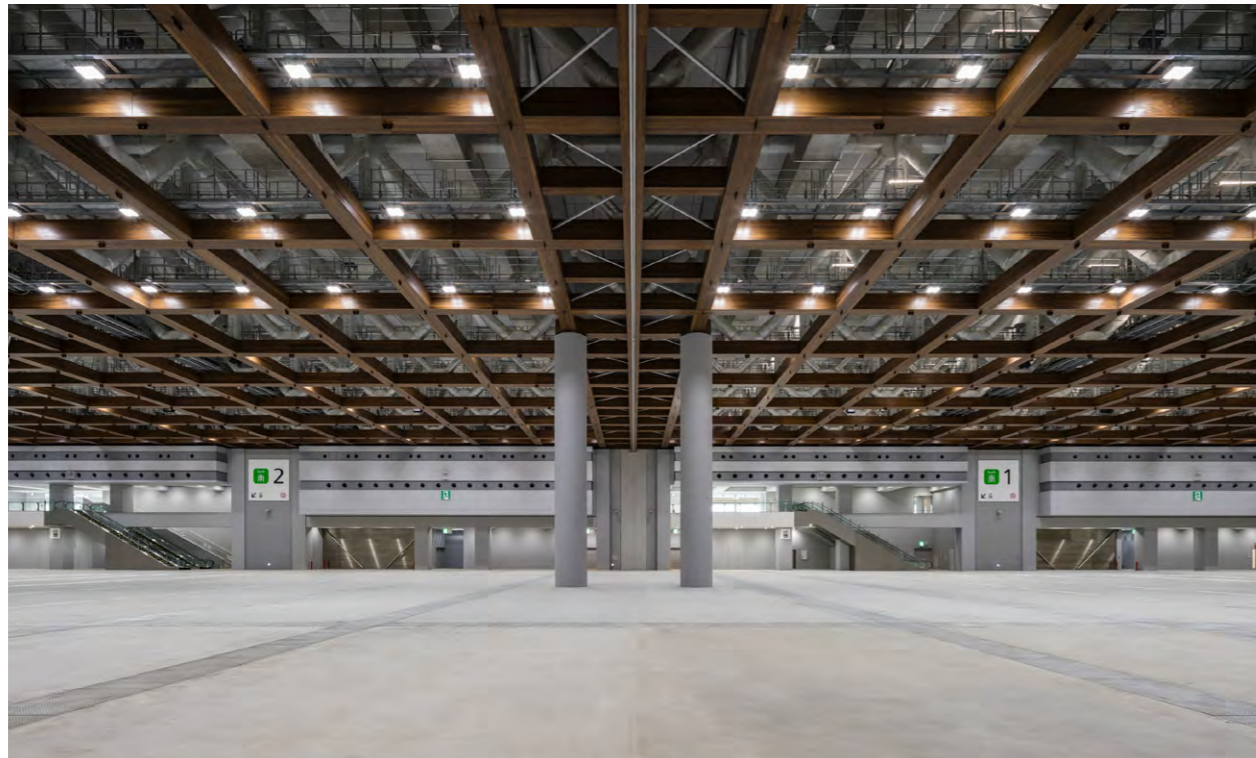
■ West Exhibition Halls Data

Name	West Hall 1	West Hall 2	West Hall 3	West Hall 4	Atrium	Rooftop Exhibition Area
Floor Area	8,880 m ²	8,880 m ²	4,680 m ²	6,840 m ²	2,000 m ²	6,000 m ²
Ceiling Height	12 m	12 m	13 m (lowest point) 18 m (highest point)	13 m (lowest point) 18 m (highest point)	23 m	—
Floor Load	5 t/m ²	5 t/m ²	2 t/m ²	2 t/m ²	0.36 t/m ²	2 t/m ²
Freight Entrance/Exit	5	5	2	4	—	—
Equipment in the Hall	Broadcasting Equipment, Air- Conditioning Equipment, Disaster Prevention Tools, etc.					
Equipment inside the Pit	West Halls 1 and 2 Tools for Electricity, A Water Supply and Drainage System, Compressor, Gas, Communication Devices, Optical High-Speed Broadband Communication Lines (B-Flets ADSL Connection) West Halls 3 and 4 Tools for Electricity, Communication Devices, Optical High-Speed Broadband Communication Lines (B-Flets ADSL Connection)					
Auxiliary Facilities	Organizer's Office, Meeting Room, Dressing Room, Kitchenette, Nursery, First Aid Room, etc.					

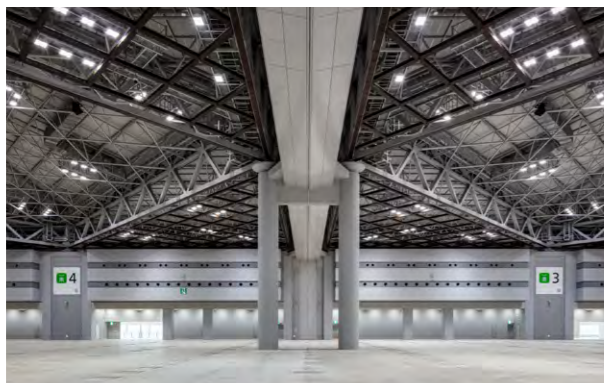
Sophisticated Space With the Warmth of Wood

The South Exhibition Halls opened in July 2019 are two-story structures and accessible to the West Halls on the fourth floor and the Conference Tower on the second via walkways. Each floor consists of two exhibition halls that respectively have floor areas of approx. 5,000m² and can be also used as a single exhibition hall with a floor area of approx. 10,000m² by opening the movable partition.

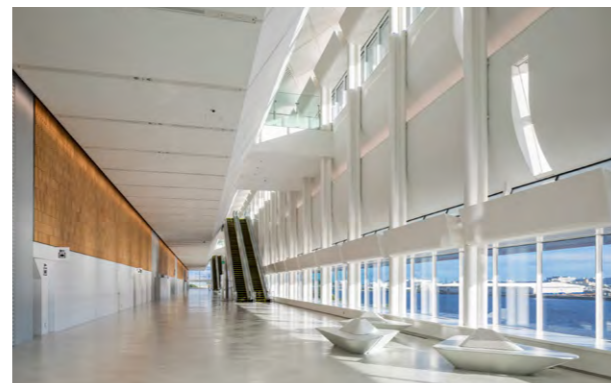
● South Halls 1-2



● South Halls 3-4



● 2F Concourse



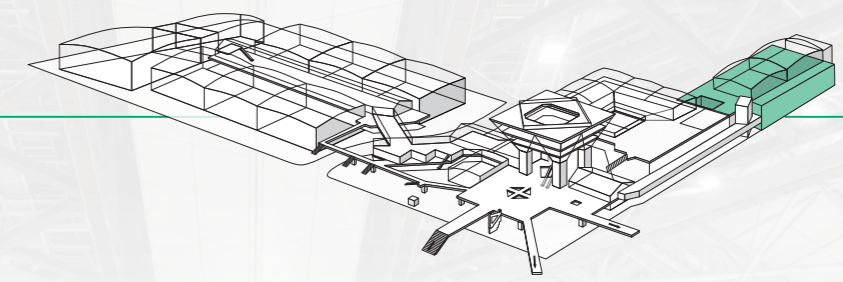
● Connecting Bridge



● View of Exhibition

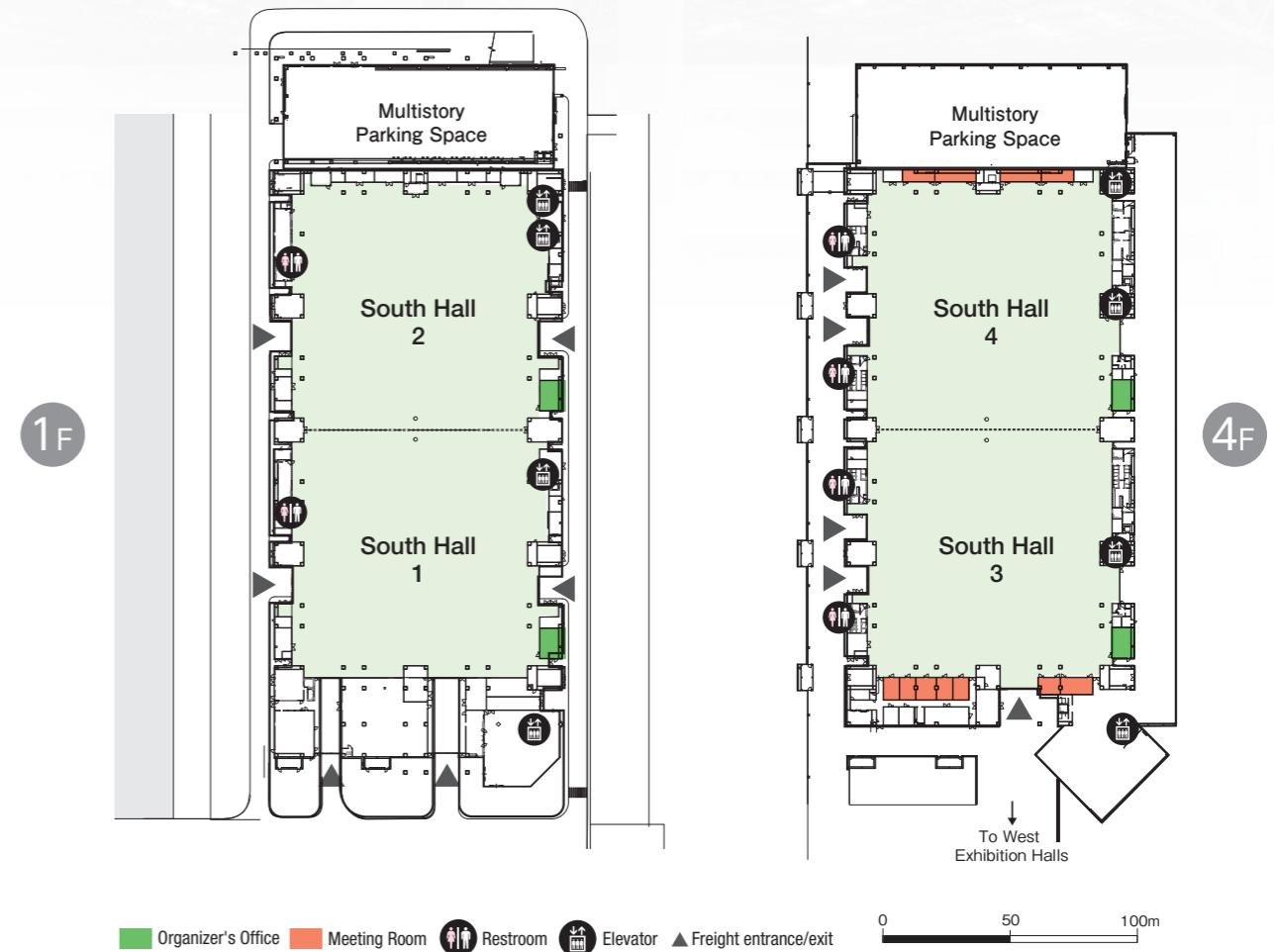


● South Conference Room A+B



South Exhibition Halls

Floor Plan



South Exhibition Halls Data

Name	South Hall 1	South Hall 2	South Hall 3	South Hall 4
Floor Area	5,000 m ²	5,000 m ²	5,000 m ²	5,000 m ²
Ceiling Height	Approx. 12 m	Approx. 12 m	Approx. 13 m above	Approx. 13 m above
Floor Load	5 t/m ²	5 t/m ²	2 t/m ²	2 t/m ²
Freight Entrance/Exit	3	2	3	2
Equipment in the Hall	Broadcasting Equipment, Air- Conditioning Equipment, Disaster Prevention Tools, etc.			
Equipment inside the Pit	Tools for Electricity, A Water Supply and Drainage System, Compressor, Gas, Communication Devices, Optical High-Speed Broadband Communication Lines (B-Flets ADSL Connection)			
Auxiliary Facilities	Organizer's Office, Meeting Room, First Aid Room, etc.			

Exquisite Link to the Exhibition Space

The Conference Tower is the landmark of Tokyo Big Sight. It caters to a variety of meetings with the International Conference Room having a capacity of 1,000 people, the Reception Hall, and 22 other conference rooms of various sizes.

The International Conference Room features facilities for simultaneous translation into eight languages, making it a venue for international conferences, seminars, symposiums, award ceremonies, and lectures.

The Reception Hall can be divided in half according to the size of the gathering making it ideal for various functions including parties, seminars, and exhibitions.

The small to medium sized conference rooms can be altered flexibly to suit the number of people or the type of meeting. Certain rooms offer views of the city, while others offer views of the waterfront.

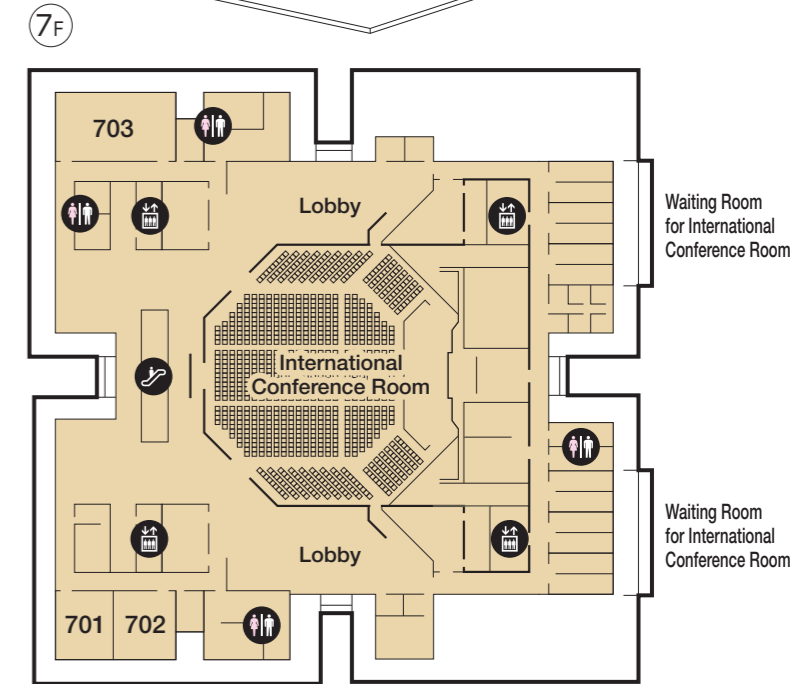
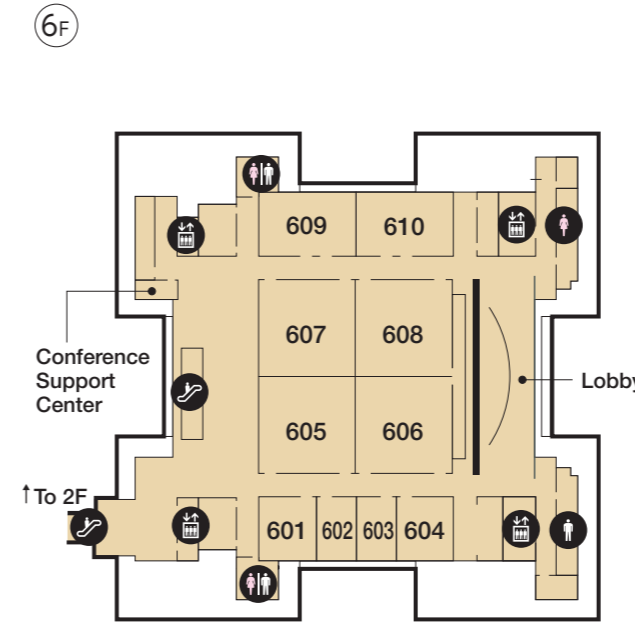
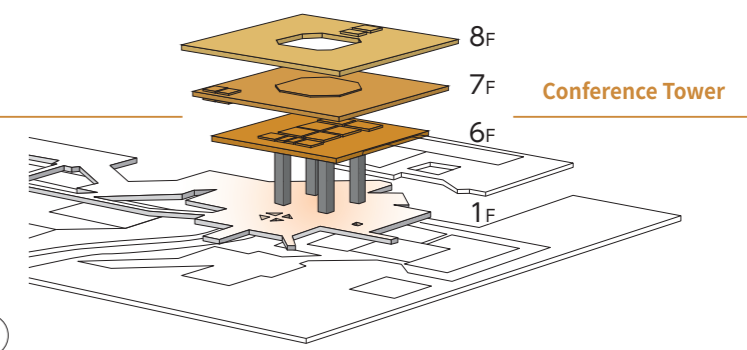
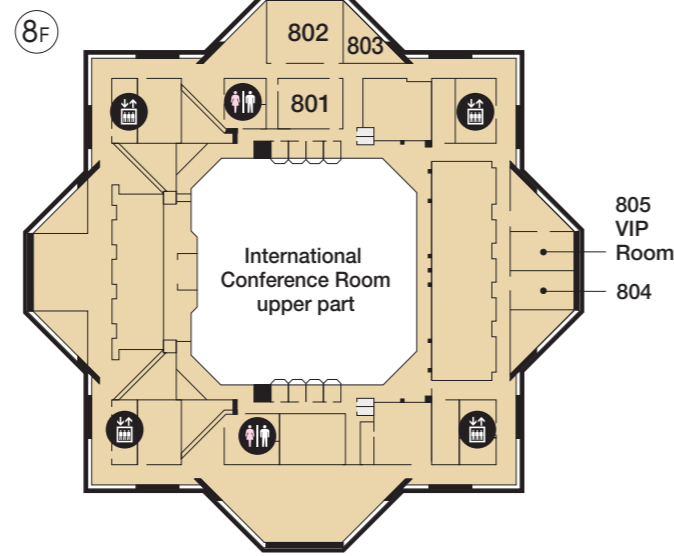
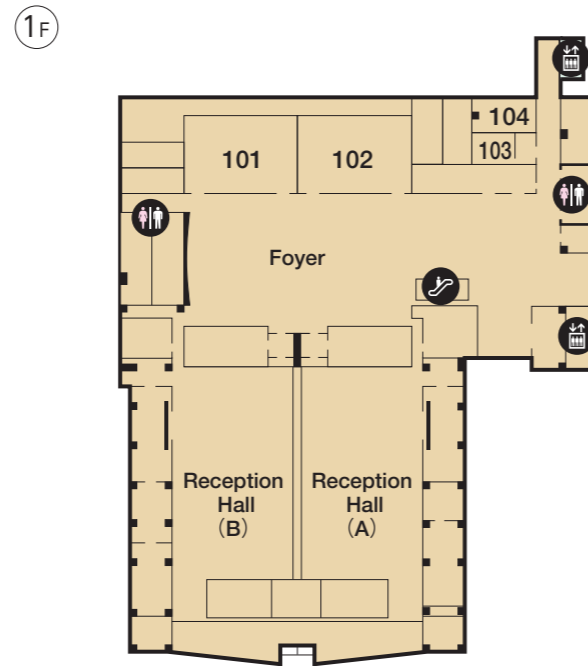
● Reception Hall



● International Conference Room



■ Floor Plan



■ Conference Room Data

Floor	1F							7F					8F				
Name	101	102	103	104	103+104	Reception Hall	Reception Hall 1/2	701	702	701+702	703	1 ^{**}	801	802	803	804	805 (VIP Room)
Floor Area (m ²)	180	180	35	50	90	1,700	700	80	80	150	150	1,030	75	100	35	55	85
Classroom (seats)	120	120	18	24	45	882	420	45	45	99	99	—	42	54	10 (fixed)	12 (fixed)	8 (fixed)
Theater (seats)	144	144	18	28	48	1,100	500	50	50	120	120	1,000 (fixed)	56	60	—	—	—
Measure (m)	9.6x16.4	9.6x16.4	4.7x7.0	5.5x8.7	10.3x9.4	38.2x32.4	38.2x15.5	8.64x8.15	8.64x8.15	8.64x16.63	8.63x16.63	—	6.05x11.01	8.64x10.6	—	—	—
Height (m)	3.7-4.2		2.5		8.8-12.2		3.7-4.2					10	3.7-4.5	3.7-4.2	3.7	3.7-4.5	

Floor	6F													
Name	601	602	603	604	605	606	607	608	609	610	605+606	607+608	605~608	
Floor Area (m ²)	80	55	55	80	190	190	190	190	135	135	380	380	760	
Classroom (seats)	36	18	18	36	126	126	126	126	72	72	252	252	504	
Theater (seats)	40	20	20	40	144	144	144	144	100	100	306	306	612	
Measure (m)	7.9x8.34	7.9x5.82	7.9x5.82	7.9x8.34	13.5x13.28	13.5x13.28	13.5x13.28	13.5x13.28	7.9x14.35	7.9x14.35	27.1x13.28	27.1x13.28	27.1x26.66	
Height (m)	3.7-4.2				3.7-4.2				3.7-4.2					

※1... International Conference Room

● 101



● 601



● 605-608



● 703



● International Conference Room



● 802



Furnishing a safe, reliable and comfortable environment

At Tokyo Big Sight, the motto of "Safety," "Reliability" and "Comfortable" is the driving force behind every possible step to furnish environments to accentuate exciting and satisfying encounters.

Tokyo Big Sight features a security and disaster prevention center and also includes restaurants, Cafés, convenience stores, Visitor & Business Center locations and other facilities and services to enhance the business environment. A "moving walkway" for smooth travel around the spacious halls, wheelchair rentals, baby care rooms, nursing rooms, AEDs (Automated External Defibrillators) and other fine amenities designed to support greater visitor convenience and pleasure are also available.

Major Facilities

Restaurants, Cafés and Convenience Stores



The restaurants and Cafés in Tokyo Big Sight serve a rich variety of cuisine. This includes Japanese, Western and Chinese dishes, light meals, coffee shop venues and numerous other selections. They also stand ready to serve as venues for receptions and social gatherings provide catering services to exhibition halls and conference rooms, arrange for box lunch deliveries and beverages and other assorted services.

The convenience stores located inside Tokyo Big Sight are generously stocked with office supplies, daily necessities, box lunches, and numerous other items frequently used during exhibition and convention events.

Service Corner (Conference Tower 2F, Entrance Hall)



In addition to selling "Big Sight Cards," which allow the holder to purchase items in restaurants and shops inside Tokyo Big Sight as well as in nearby Ariake Park Building and TFT Building, the Service Corner offers a selection of souvenirs including original Big Sight goods.

Visitor & Business Center (Conference Tower 2F, Entrance Hall)



The Visitor & Business Center features copy, rental PC space, goods sale, custody of large baggage and other detailed and specialized services geared to quickly address the on-site needs of exhibitions, conferences, conventions and other events in progress.

Conference Support Center (Conference Tower 6F)



Conference Support Center provides a diverse range of support for organizers and participants on days that conventions are held. If you

need conference equipment at short notice or have other urgent needs, please inquire with us.

Information Counter



Supports all types of queries regarding the Big Sight including a guide to the facility and event information. Wheelchairs and baby carriages are available free of charge.

Free Wi-Fi



Free Wi-Fi is available throughout Tokyo Big Sight.

Barrier-Free Toilets



Barrier-free toilets that have various functionalities such as one for Ostomates are provided across the facility.

Lockers and Cloakroom



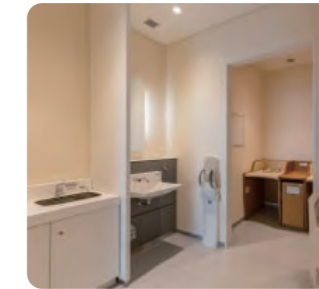
Lockers and a cloakroom allowing visitors to view exhibitions with comfort are available.

Prayer Room



The prayer room for facility users is provided in the Visitor & Business Center.

Nursing and Baby Care Rooms



Nursing and baby care rooms allowing parents with babies to use at ease are placed across the facility.

AED



For protection of visitors in the event of a disaster or an emergency situation, Tokyo Big Sight is equipped with AEDs (Automated External Defibrillator).

Rental Equipment



To enhance the convenience and ease of organizers and exhibitors, Tokyo Big Sight offers rentals of various "Chairs" and "Tables" "Electric forklifts" and other equipment designed to support successful events.

Water Dispenser



The water dispenser that can supply cold water free of charge is provided in the Atrium of the West Exhibition Hall.

Ariake Park Building, TFT Building, TIME24 Building

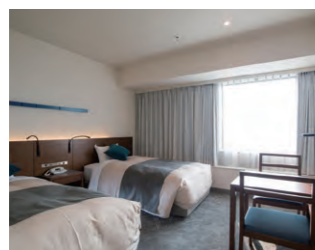
Versatile Backup for Exhibitions and Conventions

Ariake Park Building, TFT Building, TIME24 Building

Ariake Park Building



In addition to the 830-room Washington Hotel, one of the best-known hotels of the Tokyo Bay area, this facility boasts a remarkably varied collection of shops. On the first floor you'll find fast-food shop and convenience stores. The second floor provides plenty of space to relax, dine and have fun, with Japanese, Chinese, Western and seafood restaurants, izakaya pubs, family restaurants and more. You'll want to make full use of these floors in your after-convention time.

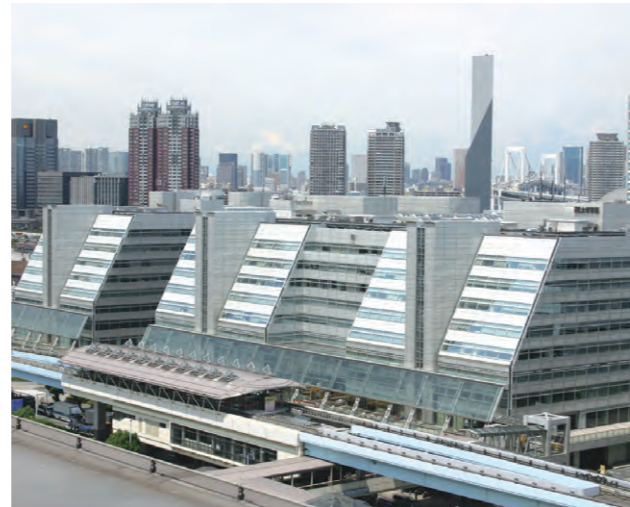


Washington Hotel Superior room(Twin)



Restaurant mall

TFT (Tokyo Fashion Town) Building



TFT (Tokyo Fashion Town) Building contains 3 halls, and a number of conference and seminar rooms that meet various needs for seminars, exhibitions, parties and test venues. In addition, this complex accommodates a variety of restaurants and retail shops that can be used in the intervals between convention sessions or meetings. The building is located in the area close to Tokyo Big Sight, which is easy to access from central Tokyo.

Hall (West Wing 2F)

Facility Name	Area (m)	School Format (seats)	Theater Format (seats)
HALL 1000	900	500	900
HALL 500	446	250	450
HALL 300	270	150	250

Conference/Seminar Rooms (East Wing 9F)

Facility Name	Area (m)	Capacity (seats)
Seminar Rooms	901	85
	902	110
	904	165
	905	180
	906	360
	907	165
	908	250
	909	250
	910	80
	Conference Rooms	9-A
9-B		95
9-C		95
9-E		120
9-F		100

* The layout of the tables can be adjusted to meet your requirements.



HALL 500



Shower Tree 35



Seminar Room 906



Conference Room 9-C



Atrium

TIME24 Building



TIME24 Building that is defined by the open office space with no pillars houses various types of seminar and conference rooms. The Sky Restaurant on the 11th floor, with seating for 300, offers a relaxing dining experience while enjoying an outstanding view.

In the Aomi district where this building is located, some public facilities to support research activities, including the National Institute of Advanced Industrial Science and Technology, and the Tokyo Metropolitan Industrial Technology Research Institute, are gathered. In addition, as the Tokyo International Exchange Center and the Tokyo International Cruise Terminal have their bases, the district is also known as the place where international exchange is actively promoted.

Overview of the Facility

Facility Name	Area (m)	Capacity (seats)	
Seminar Rooms	131	370	
	132	157	
	133	181	
	134	485	
	141	278	
	142	250	
	143	93	
	144	93	
	145	101	
	Conference Rooms	A	57
		B	36
		C	57
		D	38
		E	36
		F	57

* The layout of the tables can be adjusted to meet your requirements.



Seminar Room 131



Seminar Room 134



Conference Room A



Common Space for Seminar/Conference Rooms



Sky Restaurant SEAGULL

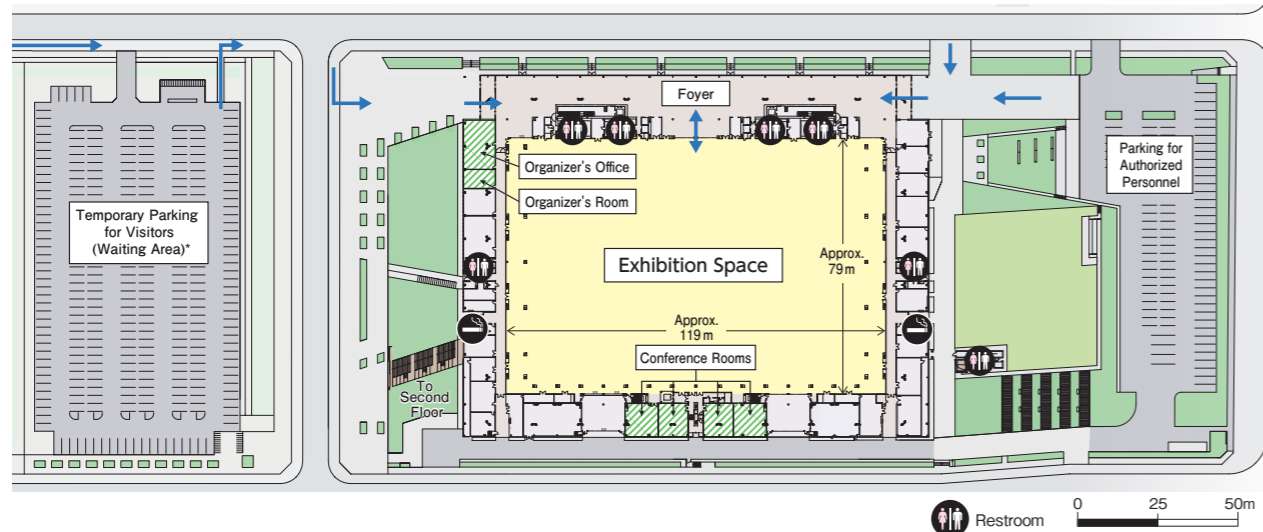
Ariake GYM-EX

The Ariake Gymnastics Center that was used during the 2020 Tokyo Olympics and Paralympics Games will reopen as "Ariake GYM-EX." The place with a total floor area of approx. 9,400m² and a ceiling height of approx. 20m offers an open space with no pillars.

● Appearance



■ Facility Outline Drawings



■ Ariake GYM-EX Data

Floor Area	Approx. 9,400 m ²
Ceiling Height	Approx. 20 m (low-ceiling section approx. 3.2 m)
Floor Load	5 t / m ²
Freight Entrance/Exit	2
Equipment in the Hall	Broadcasting Equipment, Air Conditioning Equipment, Disaster Prevention Tools, etc.
Equipment inside the Pit	Tools for Electricity, A Water Supply and Drainage System, Compressor, Communication Devices, Optical High-Speed Broadband Communication Lines
Auxiliary Facilities	Organizer's Office, Conference Room, First Aid Room



Access

