



TOKYO BIG SIGHT ANNUAL REPORT

FY2022

Tokyo Big Sight Inc.

Company Outline

Outline

Name: Tokyo Big Sight Inc.
 Address: 3-11-1 Ariake, Koto-Ku, Tokyo
 Date of establishment: April 1, 1958
 Capital: ¥5,571 million

History

March 1956 The Tokyo International Trade Fair Commission was established to host the Tokyo International Trade Fairs and other various trade fairs
 April 1958 Tokyo International Trade Center Corp. was established to operate the Harumi Fairgrounds
 March 1996 Harumi Fairgrounds were closed
 April 1996 Tokyo Big Sight was inaugurated
 May 1999 Tokyo International Trade Center Corp. completed the construction and commenced management and operation of the Ariake Park Building
 April 2000 Tokyo International Trade Center Corp. integrated business with TOKYO FASHION TOWN CORPORATION and TIME 24 CO., LTD.
 April 2003 Tokyo International Trade Center Corp. merged with Tokyo International Trade Fair Commission and changed its name to "Tokyo Big Sight Inc."

Business Activities

- Management and operation of venues at Tokyo Big Sight (Tokyo International Exhibition Center)
- Organization and operation of trade fairs and exhibitions
- Management and operation of Ariake Park Building, TFT Building, and TIME24 Building
- Management and operation of the venue at Ariake GYM-EX (Ariake Exhibition Hall)

March 2006 Tokyo Big Sight Inc. completed the acquisition of TOKYO FASHION TOWN CORPORATION and TIME 24 CO., LTD.
 January 2009 Tokyo Big Sight Inc. participated in Rinkai Holdings Group
 October 2016 Completed the construction of the New East Exhibition Halls (East Hall 7 and East Hall 8) and launched operations
 March 2019 Completed the construction of the Aomi Exhibition Halls (A Hall and B Hall) (operations terminated in December 2021)
 June 2019 Completed the construction of the South Exhibition Halls (South Hall 1 to South Hall 4) and launched operations in July
 May 2023 Opened Ariake GYM-EX (Ariake Exhibition Hall) reusing as the Ariake Gymnastics Centre which was used for the 2020 Tokyo Olympic Games

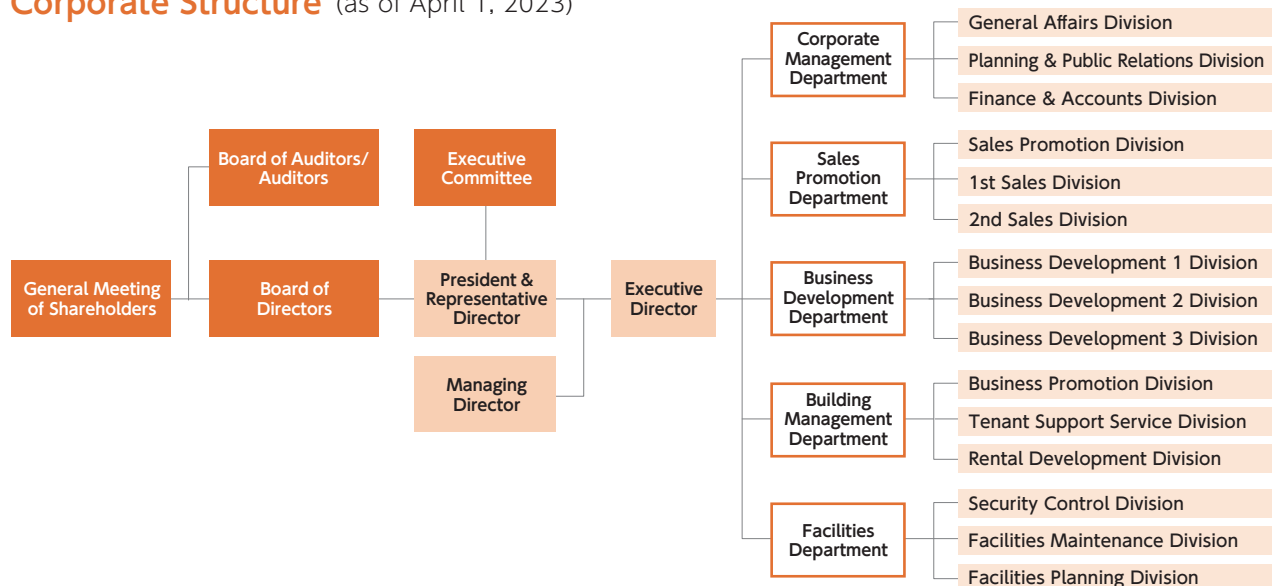
Management Concept / Management Policy / Action Standards

Management Concept	Contribute to society by promoting economic activities and regional development.
Management Policy	To establish the "Tokyo Big Sight" brand
Action Standards	Let's create "The Encounter of a Lifetime" with a sophisticated flair!

Executive Officers (as of June 29, 2023)

President & Representative Director	Kiyotsugu Ishihara (Former Director General of the Bureau of Sewerage of Tokyo Metropolitan Government)
Executive Vice President & CEO	Yasuo Tsukuni (Former Director of the Transportation Bureau of the Tokyo Metropolitan)
Executive Managing Director	Ryosuke Uematsu
Member of the Board	Haruhiko Kobayashi
Member of the Board	Masahiko Sakamoto
Member of the Board	Kazuo Minami
Member of the Board	Yoshikazu Miyata
Auditor (full time)	Kenji Yamauchi
Auditor	Seiya Shimaoka
Auditor	Takashi Utagawa
Auditor	Hirofumi Yatabe

Corporate Structure (as of April 1, 2023)



Company Overview

Stock Information (as of March 31, 2023)

(1) Total number of issued shares	Common stock 2,619,705 shares (including 79,690 shares of treasury stock)
(2) Number of shareholders	115
(3) Major shareholders (top 10)	

Name of Shareholder	Investment status in the Company	
	Number of holdings (shares)	Investment ratio(%)
TOKYO RINKAI HOLDINGS, INC.	1,924,700	75.77
Mitsui Fudosan Co., Ltd.	76,600	3.01
Toshiba Corporation	71,000	2.79
Hitachi, Ltd.	70,000	2.75
Mitsubishi Electric Corporation	60,000	2.36
Employee Stock Ownership Association of Tokyo Big Sight	37,720	1.48
Fuji Electric Co., Ltd.	34,000	1.33
Shimizu Corporation	30,600	1.20
Mizuho Bank, Ltd.	26,180	1.03
Taisei Corporation	20,600	0.81

(Note) The investment ratio is calculated based on the total number of issued shares minus the number of share of treasury stock. Note that the Company holds 79,690 shares of treasury stock, but is excluded from the major shareholders listed above.

Information on Main Subsidiary

Name of company	Big Sight Services Corporation
Capital	¥60 million
Voting rights ratio of the Company	100%
Main business activities	Services such as cleaning, waste collection, and transport and sale of goods

Information on Employees

(as of March 31, 2023)

Number of employees	112
Increase (decrease) in number of employees compared to end of previous FY	1
Average age	40.9 years old
Average years of service	14.2 years

The number of employees does not include the number of employees stationed at subsidiaries and the number of temporary employees.

Business Overview (FY2022)

In FY2022, various restrictions related to the COVID-19 pandemic were loosened, event hosting and the reopening of Japan for entry and exit by foreign nationals progressed, and it was a year with expectations for economic recovery. In the MICE industry as well, alongside new event formats such as online and hybrid event, face-to-face conferences and exhibitions were held, and these events began to regain their liveliness as places for people to meet.

In the Venue Operation Business, the South Exhibition Halls were opened as event venues in July 2019. Afterward, they have been in full-scale operation as an event space with a total exhibition area of approximately 116,000 m² since December 2021 following restricted usage during the 2020 Tokyo Olympic and Paralympic Games.

In the Exhibition organization Business, the Japan International Machine Tool Fair held for the first time in four years (JIMTOF 2022) was on the largest scale this event has ever achieved. In addition, we were also involved in the hosting of other events such as Security & Safety Trade Expo (RISCON TOKYO 2022) and the Tokyo Business Chance Expo.

In the Building Management Business, we increased opportunities for communication with resident tenants, strengthening relationships, and striving to understand and handle their needs. These efforts contributed to improved satisfaction rates. We also aimed for maintenance and improvement of occupancy rates and made efforts to provide flexible services in order to secure new tenants.

Information on Profit / Loss and Property

Category	79th Period FY2019	80th Period FY2020	81th Period FY2021	82th Period FY2022 (fiscal year under review)
Operating revenue (thousand yen)	20,953,419	14,682,969	17,962,636	20,354,818
Ordinary profit (thousand yen)	2,649,449	-441,449	1,833,580	1,493,423
Profit (thousand yen)	1,841,524	-254,777	1,214,789	-682,734
Earnings per share (yen)	724	-100	478	-268
Total assets (thousand yen)	83,546,303	78,662,299	82,633,237	79,458,677
Net assets (thousand yen)	64,853,477	64,497,099	65,610,288	64,825,953

Note: Earnings (loss) per share is calculated based on the average total number of issued shares during the period, with the average number of shares of treasury stock during the period excluded.

Balance Sheet (as of March 31, 2023)

Assets

Accounting Item	Amount	
Current assets		
Cash and deposits		24,530,463
Trade accounts receivable		428,594
Deposits paid		2,100,000
Prepaid expenses		314,609
Other current assets		3,459
Allowance for doubtful accounts		-128
Total current assets		27,376,998
Non-current assets		
Property, plant and equipment		
Buildings	61,142,230	
Accumulated depreciation	-32,021,523	29,120,707
Structures	1,574,209	
Accumulated depreciation	-1,185,906	388,303
Vehicles	2,341	
Accumulated depreciation	-2,341	0
Tools, furniture and fixtures	2,489,986	
Accumulated depreciation	-2,305,747	184,239
Land		19,169,527
Lease assets	15,524	
Accumulated depreciation	-10,681	4,843
Construction in progress		207,224
Total property, plant and equipment		49,074,846
Intangible assets		
Software		73,711
Trademark right		492
Telephone subscription right		4,859
Total intangible assets		79,063
Investments and other assets		
Shares of subsidiaries and associates		200,177
Long-term prepaid expenses		2,471,327
Guarantee deposits and leasehold deposits		256,262
Other		6,485
Allowance for doubtful accounts		-6,485
Total investments and other assets		2,927,768
Total non-current assets		52,081,678
Total assets		79,458,677

Liabilities

(Unit : thousands of yen)

Accounting Item	Amount	
Current liabilities		
Accounts payable - other		3,269,365
Lease obligations		1,467
Accrued expenses		9,520
Income taxes payable		268,792
Accrued consumption taxes		40,356
Advances received		3,399,907
Deposits received		8,334
Provision for bonuses		70,076
Other current liabilities		3,410
Total current liabilities		7,071,230
Non-current liabilities		
Lease obligations		3,914
Deferred tax liabilities		1,345,026
Provision for retirement benefits		378,128
Asset retirement obligations		1,251,133
Guarantee deposits and leasehold deposits received		4,583,290
Total non-current liabilities		7,561,493
Total liabilities		14,632,724

Net Assets

Shareholders' equity		
Share capital		5,571,000
Capital surplus		
Legal capital surplus		3,348,750
Total capital surplus		3,348,750
Retained earnings		
Legal retained earnings		300,000
Other retained earnings		
Reserve for tax purpose reduction entry of non-current assets	13,118,268	
General reserve	40,000,002	
Retained earnings brought forward	2,687,067	55,805,338
Total retained earnings		56,105,338
Treasury shares		-199,135
Total shareholders' equity		64,825,953
Total net assets		64,825,953
Total liabilities and net assets		79,458,677

(Note) Listed amounts are rounded down to the nearest thousand yen.

Statement of Income (from April 1, 2022 to March 31, 2023)

(Unit: thousands of yen)

Accounting Item	Amount	
Operating revenue		
Venue operation business revenue	10,099,607	
Event business revenue	2,339,399	
Leasing business revenue	7,658,379	
Other business revenue	257,431	20,354,818
Operating costs		
Cost of sales in venue operation business	9,992,222	
Cost of sales in event business	1,609,884	
Cost of sales in leasing business	5,585,975	
Cost of sales in other businesses	265,093	17,453,176
Operating gross profit		2,901,642
Selling, general and administrative expenses		1,416,647
Operating profit		1,484,994
Non-operating income		
Interest income	1,795	
Dividend income	19,024	
Other	1,359	22,179
Non-operating expenses		
Interest expenses		13,749
Ordinary profit		1,493,423
Extraordinary income		
Loss on retirement of non-current assets	2,983	
Impairment losses	2,523,462	2,526,445
Profit before income taxes		1,033,022
Income taxes		
Income taxes - current	641,096	
Income taxes - deferred	-991,383	350,287
Loss		682,734

(Note) Listed amounts are rounded down to the nearest thousand yen.

Management and Operation of Tokyo Big Sight

◆ Overview

In FY2022, various restrictions related to the COVID-19 pandemic were loosened, event hosting and the reopening of Japan for entry and exit by foreign nationals progressed, and it was a year with expectations for economic recovery. In the MICE industry as well, alongside new event formats such as online and hybrid event, numerous face-to-face conferences and exhibitions were held, and even while measures to prevent the spread of COVID-19 infection continued to be implemented, these events were able to regain their liveliness as places for people to meet.



Outline of Tokyo Big Sight (as of July 2023)

Official name:
Tokyo International Exhibition Center

Address:
3-11-1 Ariake, Koto-ku, Tokyo

Ground-floor area: 265,751 m²

Building area: 185,348 m²

Total floor area: 316,990 m²

Exhibition facilities:

Indoor exhibition area(3 buildings, 16 halls)
(Total exhibition area: 115,420 m²)

Rooftop exhibition area (6,000 m²)

Convention facilities:

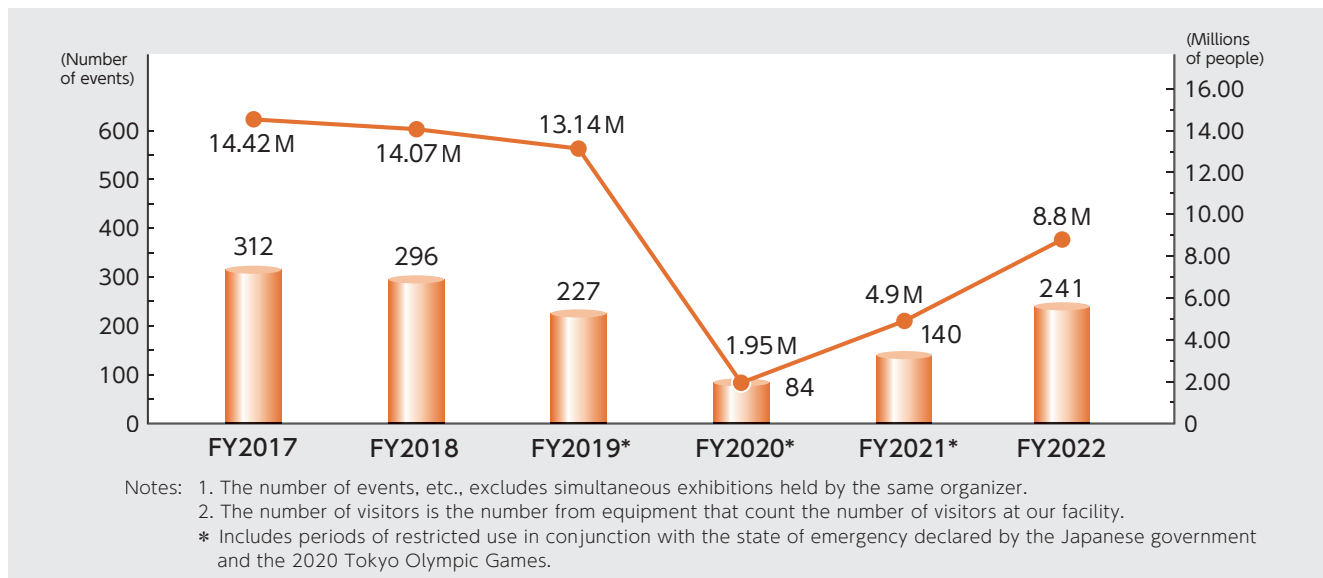
International Conference Hall(capacity of 1,000 people)

Reception Hall (1,700 m²)

Meeting rooms(22 rooms ranging from 35 m² to 760 m²)

◆ Number of Events and Visitors

(as of April 2023)



◆ Exhibition Hall Occupancy Rate

Fiscal year	FY2017	FY2018	FY2019	FY2020	FY2021	FY2022
Exhibition hall occupancy rate	76.2%	73.9%	69.5%	22.7%	53.5%	51.6%

◆ Ariake GYM-EX NEW

● New Exhibition Hall in the Ariake North District (opened May 18, 2023)

As a means of reusing the Ariake Gymnastics Centre used in the 2020 Tokyo Olympic and Paralympic Games, the Tokyo Metropolitan Government established this exhibition hall with approximately 9,400 m² of total exhibition space to promote the prosperity of small and medium-sized enterprises in Tokyo. The nickname chosen for the facility is “Ariake GYM-EX” which combines the location (Ariake) with an expression of the sport it was used for (GYMnastics) and its current role (EXhibition hall).

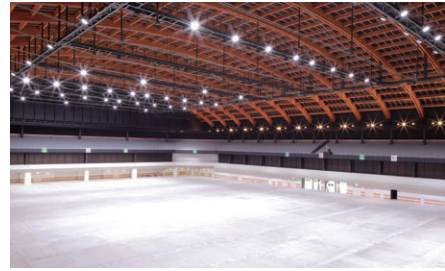


◆ Year-Long Initiatives

● New Facilities and Equipment

● Ariake GYM-EX preparations

We carried out the preparation for reuse of the Ariake Gymnastics Centre used in the 2020 Tokyo Olympic and Paralympic Games as an exhibition hall.



● Building-integrated solar power generation equipment

As part of the Tokyo Metropolitan Government Bureau of Environment's "renewable energy visualization model project for government-owned facilities" efforts, building-integrated solar power generation equipment was installed within the Tokyo Big Sight premises.



● Fire and Crime Prevention Measures

● Self-defense fire drills, etc.

We held statutory self-defense fire drills twice in the year under review. Additionally, we conducted individual training through Tokyo Big Sight security staff such as training on contacting authorities, training on operating fire extinguishers, and training for dealing with suspicious persons. We also held joint self-defense fire drills with organizers. Through these activities, we worked to improve the safety and security of Tokyo Big Sight.

● Joint training for sudden events

On February 14, 2023, under the guidance and cooperation of the Metropolitan Police Department, joint training for sudden events during exhibitions was conducted covering how to deal with suspicious persons and provide evacuation guidance. Facility and event security personnel participated in this joint training session to strengthen coordination and improve their response capability.



● Stimulating the liveliness of the local area

● Tokyo International Projection Mapping Awards Vol. 7 (November 19, 2022)

The viewing and final judging event for the 7th iteration of these awards, which utilized the wall surface of the Conference Tower, were implemented both in-person and in an online format, and there were approximately 7,000 in-person and 320,000 online attendees.

Through the sponsorship activities related to these awards, we will continue to create regional prosperity while simultaneously supporting the discovery and education of the next generation of spatial video creators. (Next event planned for Saturday, November 11, 2023.)



Grand prize student team



Grand prize winner

Exhibition Hosting / Operations Business

◆ 2022 Event Reports

Security & Safety Trade Expo (RISCON TOKYO) 2022 / Special Equipment Exhibition and Conference for Anti-Terrorism (SEECAT) 2022



- ◆ Period: October 5 (Wednesday) - 7 (Friday), 2022
- ◆ Organizer: Tokyo Big Sight Inc.

Held at Tokyo Big Sight's West Exhibition Halls for the first time in four years, these events were a comprehensive exhibition of products and services related to crisis management, gathered together from both Japan and overseas. The exhibition was divided into the three main categories of "Disaster Risk Reduction," "BCP / Business Risk Management," and "Security." There were also risk management proposals related to new fields such as cybersecurity and drones. In addition, expectations were high for the SEECAT 2022 exhibition held concurrently due to increased interest in counterterrorism and its status as the only exhibition event in Japan dedicated to this field, and there were a large number of attendees.



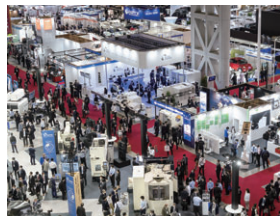
Event Name	Exhibition Number	Year Held	Booths	Exhibitor Companies	Registered Visitors
RISCON	18th	2022	421	276	14,287
SEECAT	16th	2022	127	76	4,963

JIMTOF 2022 (The 31st Japan International Machine Tool Fair)



- ◆ Period: November 8 (Tuesday) - 13 (Sunday), 2022
- ◆ Organizers: Japan Machine Tool Builders' Association / Tokyo Big Sight Inc.

One of the largest international technology shows in the world, JIMTOF is a comprehensive trade fair for manufacturing featuring a global gathering of machine tools, various peripheral items, advanced technologies, and products.



This year marked the 60th anniversary of this exhibition, and it was held on the largest scale to date using all of Tokyo Big Sight's exhibition halls. In addition, the "Additive Manufacturing Area in JIMTOF 2022," a space collecting products and technology in a single location related to AM and 3D printing, fields which are getting increasing attention for their innovation of the manufacturing industry, was implemented for the first time. During the fair, large number of exhibiting companies proactively sought out new customers and promoting their business, engaging in lively business meetings with the attendees.

Exhibition Number	Year Held	Booths	Exhibitor Companies	Registered Visitors
31st	2022	5,618	1,087	114,158

Tokyo Business Chance Expo



- ◆ Period: Onsite exhibition: December 14 (Wednesday) - 15 (Thursday), 2022
Online exhibition: December 5 (Monday) - 19 (Monday), 2022
- ◆ Organizer: The Tokyo Chamber of Commerce and Industry
- ◆ Co-Organizer: Tokyo Big Sight Inc.



The event was held with the three exhibition zones of "Proposals for reintroduction of the attraction of local areas and creating new value," "Proposals for safety and security in daily life," and "Proposals for productivity enhancement and problem-solving solutions," 11 exhibition fields, and a "Regional Chamber of Commerce area" set up. The onsite exhibition featured spaces set up for attendees to see, hear, and experience for themselves what to expect from the use of exhibited technology and services in wide-ranging situations, and the online exhibition provided an extensive variety of content such as exhibitor company information checking and online business negotiations.

Exhibition Number	Year Held	Booths	Exhibitor Companies	Registered Visitors (onsite)	Registered Visitors (online)
2nd	2022	369	297	3,279	3,694

◆ 2023 - 2024 Event Announcements

Tokyo International Fire and Safety Exhibition 2023 (FIRE-SAFETY TOKYO)



- ◇ Period: June 15 (Thursday) - 18 (Sunday), 2023
- ◇ Organizers: Tokyo Fire Department / Tokyo Big Sight Inc. /
Tokyo International Fire and Safety Exhibition 2023 Executive Committee

Tokyo International Fire and Safety Exhibition 2023 (FIRE-SAFETY TOKYO) is one of Japan's largest fire and disaster prevention events, and it is held once every five years. This exhibition will spread knowledge about disaster countermeasures and diversified disaster risks which have developed by taking lessons from the damages of past disasters, elevating Tokyo residents' knowledge and ability to take action related to fire and disaster prevention. In addition, the event aims to strengthen mutual cooperation among the three parties of residents, businesses, and government and promote the production of related technology and industry, working toward the achievement of safe city goals. This year's event will be the 11th iteration, and it is expected to be the largest-scale exhibition to date.

Security & Safety Trade Expo (RISCON TOKYO) 2023 / Special Equipment Exhibition and Conference for Anti-Terrorism (SEECAT) 2023



- ◇ Period: October 11 (Wednesday) - 13 (Friday), 2023
- ◇ Organizer: Tokyo Big Sight Inc.

The Security & Safety Trade Expo (RISCON TOKYO) is one of the largest comprehensive crisis management themed trade shows in Japan, covering three main themes: "Disaster Risk Reduction," "BCP / Business Risk Management," and "Security." The exhibition features a collection of products and services for handling various issues and risks. In addition, implementation of "Risk Control DX / Cyber Security Solution" and "Risk Control Drone Solution" as cross-category combine project proposals for the three main themes is planned. Alongside the Special Equipment Exhibition and Conference for Anti-Terrorism (SEECAT) event held concurrently, the two events will propose "new crisis management" for business activities of enterprises, the national government, and local government organizations, supporting the creation of new business.

Tokyo Business Chance Expo



- ◇ Period: December 6 (Wednesday) - 7 (Thursday), 2023
- ◇ Organizer: The Tokyo Chamber of Commerce and Industry
- ◇ Co-Organizer: Tokyo Big Sight Inc.

The Tokyo Business Chance Expo is a comprehensive exhibition where Companies in Tokyo with unique technology and products gather together to promote their products and services to attendees with the goal of developing new sales channels. 2023 marks the event's third year. Companies related to the four fields, "Food," "Lifestyle," "Manufacturing," and "Services and Digital Transformation" will exhibit. Gathering diverse companies in one place gives the exhibitors the opportunity to directly promote their products and services to meet the problem-solving needs of attendees. This exhibition supports creating new encounters crossing over industry boundaries the acquisition of new business chances. In addition, the exhibition will be implemented with substantial exhibitor support such as "Business Chance Negotiation Meetings" and experience spaces.

Japan International Aerospace Exhibition 2024



- ◇ Period: October 16 (Wednesday) - 19 (Saturday), 2024
- ◇ Organizers: The Society of Japanese Aerospace Companies (SJAC) / Tokyo Big Sight Inc.

The Japan International Aerospace Exhibition is the largest comprehensive aerospace exhibition event in Japan which gathers together major Japanese domestic and international enterprises, government organizations, embassy officials, and industry personnel. Companies from a wide range of industries will exhibit, introducing a broad range of areas such as the manufacture, operation, and MRO for aviation, space, and defense technology, as well as new areas such as UAM and decarbonization.

◆ Operations Business

JAPAN MOBILITY SHOW 2023



- ◇ Period: October 26 (Thursday) - November 5 (Sunday), 2023
- ◇ Organizer: Japan Automobile Manufacturers Association, Inc.
- ◇ Operations: Tokyo Big Sight Inc.

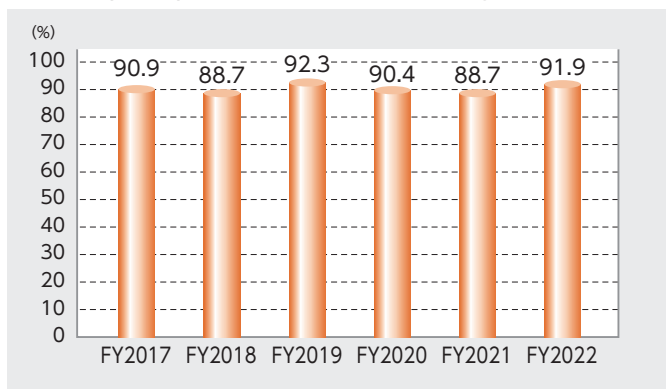
For 2023, the name will be changed from Tokyo Motor Show to JAPAN MOBILITY SHOW, marking a new start for the event. Our company is taking on a portion of the operations as an outsourcer. Utilizing our knowledge of venue management and exhibition hosting, we will implement smooth operations as the executive office while creating regional revitalization and prosperity through the event, in turn contributing to Japan's economy as a whole.

Building Management Business

◆ Overview

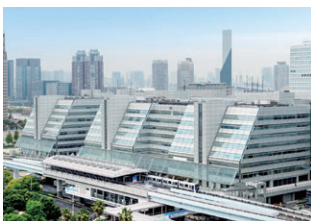
In our Building Management Business, we increased opportunities for communication with resident tenants, strengthening relationships while simultaneously striving to understand and handle their needs. These efforts contributed to improved satisfaction rates. We also aimed for the maintenance and improvement of occupancy rates and made efforts to provide flexible services in order to secure new tenants.

● Occupancy Rate of Three Buildings



● Tokyo Fashion Town (TFT) Building

The TFT Building accommodates approximately 50 companies. Its three halls, conference rooms, and seminar rooms fulfill various needs such as seminars, exhibitions, and parties. The 1st to 3rd floors feature various facilities ranging from restaurants and shops to a post office, clinics, dentists, and a nursery school.



Address: 3-6-11 Ariake, Koto-ku, Tokyo

Facilities: Offices, rental halls, rental conference rooms/seminar rooms, shops
 Ground-floor area: 29,541 m²
 Building area: 23,623 m²
 Total floor area: 162,720 m²

Number of floors: Above ground : 9 floors

Below ground: 2 floors in West Wing, 1 floor in East Wing
 Penthouse: 2 floors in West Wing, 2 floors in East Wing
 Major tenants: YAMADA-DENKI Co., Ltd. Otsuka Kagu Division, Japan Pension Service, etc.

● Ariake Park Building

This building is complex of hotels, offices, and commercial facilities. It features the Tokyo Bay Ariake Washington Hotel, widely used by visitors to Tokyo Big Sight, as well as a variety of restaurants.



Address: 3-7-11 Ariake, Koto-ku, Tokyo

Facilities: Hotel, shops, and offices
 Ground-floor area: 9,899 m²
 Building area: 7,712 m²
 Total floor area: 70,113 m²

Number of floors:

22 floors above ground, 3 floors below ground, 1 penthouse floor
 Major tenants: Fujita Kanko Inc., etc.

● TIME24 Building

Located in the Aomi area, the TIME24 Building is an intelligent building equipped with a BCP generator. In addition to office space created by an expansive non-columnar interior, the building also features conference rooms and seminar rooms suitable for needs such as internal conferences and various types of training sessions. There is also a restaurant with gorgeous views and approximately 300 seats located on the 11th floor.



Address: 2-4-32 Aomi, Koto-ku, Tokyo

Facilities:
 Offices, rental conference rooms/seminar rooms, shops
 Ground-floor area: 10,588 m²
 Building area: 4,989 m²
 Total floor area: 66,485 m²

Number of floors:

19 floors above ground, 1 floor below ground, 2 penthouse floors
 Major tenants:
 TOKYO GLOBAL GATEWAY Co., Ltd., Softbank Corporation, etc.

◆ Year-Long Initiatives

● Providing Comfortable and Cozy Spaces

In order to ensure office workers spend their time in comfort, we carried out cozy space creation. At the TFT Building, we created a new art space featuring artistic and seasonal decorative paintings and expanded the rest spaces on each floor. In addition, by changing the furniture and design of the entrance hall which welcomes all the office workers into the TIME24 Building, we provided a calm space.



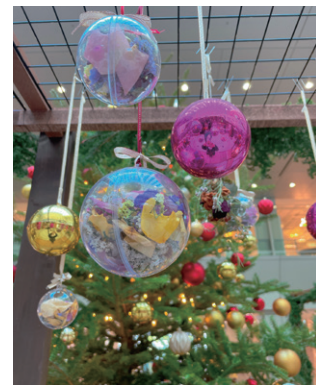
● Inviting Pop-Up Store Utilizing Shared Spaces

At the TFT Building, we invited a variety of pop-up stores to provide enjoyment to the office workers. The exhibitions of local products from various regions, vegetable markets, and fashion-related sales events were all highly-praised. We will continue to proactively invite appealing pop-up stores to provide satisfaction to the office workers.



● Implementing Sustainable Christmas Decorations

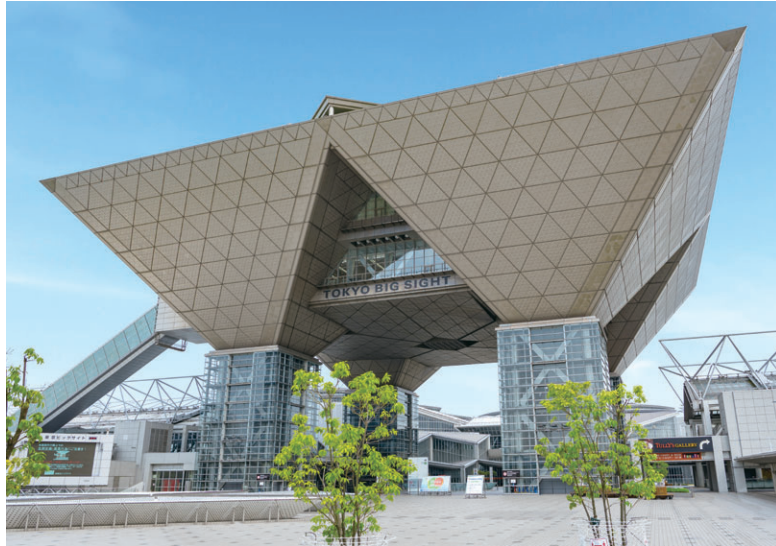
At the TFT Building, we implemented glamorous Christmas decorations with additional elements in shared spaces. With the SDGs in mind, we reused flowers which were scheduled for disposal, also known as Plus Flowers, for these decorations. In addition, we carried out appealing projects that give participants a sense of sustainability such as enabling the office workers to experience these Plus Flower decorations first-hand.



● Holding Atrium Concerts

At the TFT Building, we held a Christmas concert for the first time in about three years. The hand bell and piano performance provided a change from the everyday, and lovely sounds echoed throughout the atrium. In the future, we will host other appealing events in an effort to increase satisfaction among the office workers.





Tokyo Big Sight



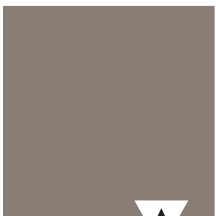
Ariake Park Building



Tokyo Fashion Town (TFT) Building



TIME24 Building



TOKYO BIG SIGHT

Tokyo Big Sight Inc.

3-11-1 Ariake, Koto-ku, Tokyo 135-0063 Japan
TEL: +81-3-5530-1111 (main line) FAX: +81-3-5530-1222
<https://www.bigsight.jp/english/>

(July 2023)