

Sustainability Activities

What Tokyo Big Sight Can Do for a Sustainable Society

In recent years, the demand for corporate social responsibility has greatly increased, such as the emphasis on ESG and involvement in the SDGs. In response, we formulated our CSR Policy to detail our fundamental principle of fulfilling social responsibilities primarily through our business activities. Based on this policy, we will engage in business activities while maintaining good relations with our stakeholders. Tokyo Big Sight contributes to achieving SDGs related to our business activities while clarifying our connections to these goals and raising awareness among our employees about them.



CSR Policy

Basic Principle

Based on our basic principle of "Contributing to society by promoting economic activities and regional development," we at Tokyo Big Sight Inc. are active primarily in business involving exhibition venues and buildings to fulfill our social responsibilities as good corporate citizens.

Action Standards

We have set four action standards as our primary means to promote CSR, engaging in our business activities while maintaining good relations with our stakeholders.



1. **Creating Safe, Secure, Comfortable Environments**



2. **Environmental Conservation and Sustainable Business Practices**



3. **Contributing to the Development of Local Communities**



4. **Strong and Sound Organizational Structure**

1. Creating Safe, Secure, Comfortable Environments

Tokyo Big Sight builds safe, secure, and comfortable environments by maintaining and strengthening our risk management system, including measures against large-scale disasters and infectious diseases, as well as providing facilities and services that take into account the needs of various visitors.

SDGs



Our Initiatives

Disaster Crisis Management

● Crisis Management System for Large-scale Disasters

In order to ensure the safety of our customers, we have established a crisis management system that includes early detection of damage, recovery, and construction of a support system in the event of a crisis such as an incident, accident, or disaster.

In addition, we regularly carry out various disaster drills and other activities assuming earthquakes and fires.



● Role as a Temporary Accommodation Facility for Large-scale Disasters

Tokyo Big Sight and the three buildings we own are temporary accommodation facilities in the event of a large-scale disaster based on an agreement with the Tokyo Metropolitan Government. The facilities are stockpiled with drinking water, food, portable toilets, and generators for three days in preparation for disasters.



Providing Safe and Secure Facilities and Services

● Development of a Safe and Secure Environment

At Tokyo Big Sight, we are developing the environment of our facilities with the aim of improving convenience for all users, including free Wi-Fi, barrier-free toilets, a prayer room, baby care rooms, and wheelchair rentals.

In addition, we are disseminating information on the exhibitions held safely and securely via the internet and SNS.



Providing Safe and Secure Facilities and Services

● First Aid Training

We continuously conduct regular life-saving training for all employees to acquire knowledge and skills in first aid, and learn about cardiopulmonary resuscitation, foreign body removal, hemostasis, and AED handling. In recognition of our continued efforts, we received a Certificate of gratitude from the Tokyo Fire Department in September 2021.



● “Universal Manners” for the Elderly and Disabled

By manualizing and training on how to serve the elderly and disabled, we are promoting the improvement of knowledge and awareness of universal manners among our employees and facility personnel. We will continue to aim for communication from the perspectives of diverse customers.



● Thorough Countermeasures Against Infection in Event Facilities

Based on the policies of the government, Tokyo Metropolitan Government, and industry association, we implemented thorough hygiene management as a facility operator. We also provided safe and secure venues by disseminating appropriate information to facility users and informing them of information on the use of our facilities.



● Providing Safe and Reliable Menu Options at On-site Restaurants

To ensure that visitors from Japan and overseas with dietary restrictions for various reasons can dine with confidence, we have introduced food pictograms (“Food Picto”) at on-site restaurants. These pictograms clearly indicate the ingredients used in the dishes served at our restaurants, helping visitors make informed choices.



● Ensuring Thorough Hygiene Management at Building-based Retail Stores

To provide safe dining experiences, we conduct food safety training sessions for employees of restaurants and convenience stores within the building, inviting instructors from the local public health center to help prevent food poisoning.

In addition, we require the submission of hygiene management records based on the HACCP approach, which focuses on identifying and preventing potential hazards when handling food.



“Disaster Resilient ” Waterfront City



Tokyo Waterfront City, where Tokyo Big Sight is located, has been developed with the concept of "disaster resilient city". There are no utility poles, and lifelines such as water and sewerage, electricity, gas, and information and communication are housed in utility tunnel to ensure safe supply.

In addition, the adjacent Tokyo Rinkai Regional Disaster Prevention Park is developed as a disaster prevention base facility for compiling disaster information and coordinating disaster emergency measures in the event of a large-scale disaster such as an earthquake directly under the Tokyo metropolitan area.

●Ongoing CS improvement activities

We conduct regular CS surveys for the visitors of Tokyo Big Sight and the tenants of our buildings, steadily implementing improvements based on the results of these surveys. In addition, the Office Building Division publishes e-newsletters for tenants and organizes various events to improve tenant satisfaction and strengthen communication.

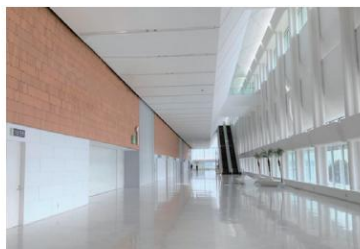


Initiatives Based on CS Surveys

◆ In order to improve our customer services, we started providing free Wi-Fi from April of 2021. The free Wi-Fi can be used in all areas of the Exhibition Halls and the Conference Tower.



◆ Increased Signage in the South Exhibition Halls
In order to improve visibility for visitors, hall entrance signage was added in March 2021.



Before



After

◆ Lunch Space for Tenants' Exclusive Use
In order to alleviate lunchtime crowds in the TFT Building, we have set up a dedicated space for tenant employees in the restaurant area on the second floor, and we have also enhanced lunch box sales.



◆ Installation of Delivery Lockers
Delivery lockers was installed for improving convenience in the TFT building. They are welcomed by office workers as they make it possible to receive packages in a contactless way at the timing of users.



◆ Local 5G Network Service on the 1st Floor of the West Exhibition Halls
A local 5G network environment has been set up on the first floor of the West Exhibition Halls, and We have started the local 5G device service to the organizers and exhibitors as part of the communication line service from October 2023.



◆ Started a service lending AI translation device
In order to improve customer convenience, we have started a service lending AI translation device.

2. Environmental Conservation and Sustainable Business Practices

Tokyo Big Sight contributes to the realization of a sustainable society by promoting activities that take into account environmental conservation and sustainability while pursuing our business, including facility and exhibition management.

SDGs



Our Initiatives

Environment Conservation

● District Heating and Cooling System

The cold and hot water used at Tokyo Big Sight is supplied from the Ariake south plant through a utility tunnel that runs through the waterfront area. At the plant, waste heat steam from local garbage disposal plant is used to prevent global warming, reduce CO₂, and save energy.



● Implementing environmental measures

Tokyo Big Sight, as a large-scale business site, has submitted a plan to counteract global warming to the Tokyo Metropolitan Government's Bureau of Environment, in collaboration with the Tokyo Metropolitan Governments.

We have held three conferences on environmental measures, based on our promotion system to counteract global warming, and have confirmed the total CO₂ emissions of our business.



● Cooperation for "ZERO Emission Tokyo"

In September 2020, we cooperated with the Tokyo Metropolitan Government's "Zero Emission Tokyo" plan and provided 59,274 tons of CO₂ reduction credits generated under the Tokyo Cap & Trade System.



● No Plastic Straws

In cooperation with shops and restaurants in Tokyo Big Sight, we have been conducting a campaign to abolish plastic straws since 2021. We are promoting replacement plastic straws with paper and biodegradable straws and the provision of drinks with no straws.



● Promoting paperless practices

We promote paperless practices such as paperless meetings and reducing the use of faxes. We are also examining the use of PDFs for manuals and other printed materials for exhibitions we hold. In addition, we introduce electronic internal application procedures for the purpose of improving operational efficiency.



Contributing to a Society in Harmony with Nature

Located in a seaside area with attractive landscapes and waterfront parks, Tokyo Big Sight manages approximately 40,000 square meters of green space, including gardens, green walls, and rooftop gardens.

The garden, which is the foreground of the venue, is designed with consideration for creating a continuous landscape with the nearby waterfront parks, and it serves as a resting post for wild birds.

We will continue to manage the garden appropriately with the aim of creating a comfortable space for visitors and workers and preserving the nature of the Ariake area.



CO₂ Reduction

● Promoting the shift to LEDs

Tokyo Big Sight is shifting to LED lighting for our exhibition halls, reducing the amount of electricity consumed and CO₂ emissions. In addition, we are promoting the conversion of building lighting to LED at the TFT Building and the Time24 Building.

● Promotion of ZEV (Projects in Cooperation with Tokyo Metropolitan Government)

We installed EV chargers in the basement parking area of the Conference Tower, encouraging the spread of zero emissions vehicles (5 chargers, 1 fast charger) We have also introduced ZEV as a company car.

● Solar Thermal Utilization

Heat collectors installed on the rooftop of the conference tower collect the thermal energy of the sun and use it for supplying hot water to the kitchens of the on-site restaurants. We are working to reduce CO₂ emissions by efficiently utilizing solar heat, which is a renewable energy.

● Maintaining and promoting greenery

Greenery is placed on walls and rooftops to improve urban scenery, clean the air, heighten the insulation of the buildings, and moderate the heat island phenomenon.

● Promoting the Use of Community Cycles and Electric Scooters

We have installed ports for Koto City's shared bicycles as well as electric-assist bicycles and electric scooters in the garden area, providing local residents and visitors with environmentally friendly, zero-CO₂-emission transportation options. These services are also utilized as a means of transportation for employees.

● The study committee for decarbonization in Tokyo Waterfront City

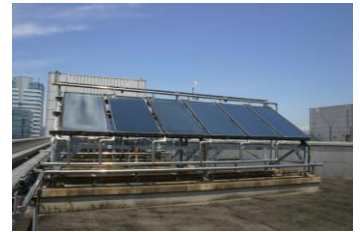
In September 2023, the Tokyo Waterfront City Association and Tokyo Metropolitan Government Bureau of Port and Harbor launched a special project called the "Decarbonization of Waterfront Area Development Study Committee" in order to accelerate decarbonization efforts in Tokyo waterfront city. We participate in the development of a "vision" for the decarbonization of the region in cooperation with local businesses and will work to promote the decarbonization of the region.

● ZEV penetration through ABB FIA Formula E World Championship

ABB FIA Formula E World Championship was held around Tokyo Big Sight on March 30, 2024. Formula E is an urban race for electric vehicles without engine noise or exhaust emissions, held in major cities around the world, and was held in Tokyo for the first time. Tokyo Big Sight cooperated with the Tokyo Metropolitan Government to promote and expand the use of ZEV zero-emission vehicles, which do not emit CO₂, and to show the world the appeal of Tokyo Waterfront City as the venue for the championships.

● Use of Green Hydrogen Produced in Yamanashi Prefecture(Projects in Cooperation with Tokyo Metropolitan Government)

As part of the Tokyo Metropolitan Government's cooperative project, Tokyo Big Sight installed fuel cells on site as the first Tokyo-owned facility to use green hydrogen produced in Yamanashi Prefecture and use it as part of the electricity in the facility in order to ensure a stable energy supply and to work toward decarbonization.



● **Effective Use of Resources**

Tokyo Big Sight is working on the reduction of the waste and promoting recycling at exhibitions. In addition, proper waste disposal is supervised to prevent in advance any unlawful acts such as illegal dumping.



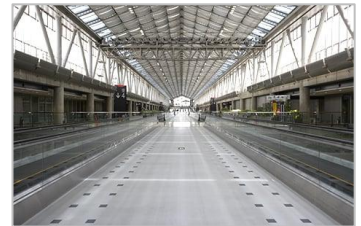
● **Food Waste for Animal Feed**

Food waste (uncooked food, leftovers, unsold food) generated from restaurants in Tokyo Big Sight is processed into raw materials for feed for poultry and pig farming. In addition, methane gas generated in the feed manufacturing process is used for biogas power generation.



● **Use of Rainwater**

Rainwater falling on the roof of the East Exhibition Halls' galleria and South Exhibition Halls is retained in a tank to be filtered and sterilized to supply recycled water for flush toilets in the exhibition halls.



● **Installation of a Water Dispenser**

(2022~ Projects in Cooperation with Tokyo Metropolitan Government)

To promote environmentally friendly lifestyles, we have installed a water dispenser that can supply cold water free of charge in the atrium of the West Exhibition Hall. We will contribute to the reduction of single-use bottles.



● **Sustainable Christmas Decorations with Flowers to be Discarded**

Since 2021, we have installed sustainable Christmas decorations that reuse flowers to be discarded in TFT building. Our tenants' workers can participate in SDGs actions while having fun through the event, such as actually decorating the Christmas wreath with flowers into and taking flowers home on the last day of the decoration.



● **Reuse of Furniture and Fixtures**

We reuse furniture such as sofas, desks, and chairs that are no longer needed by our tenant companies by receiving them and installing them in shared common areas within the building. These reused items have created new Lounge Area that are widely used by visitors, contributing to improved visitor satisfaction.



Renewable Energy

● Installation of Solar Panels

We have installed an 800kW solar power system in the South Exhibition Halls, to generate a maximum of 28 halls' worth of electricity. The power generation status can be seen in real time on the signage in the South Exhibition Halls.
※Based on the high ceiling lighting (average usage value of 28.6 kW) of the South Exhibition Halls.



● Adoption of Vibration-Powered Generator

(2020-2022 Projects in Cooperation with Tokyo Metropolitan Government)

We have adopted power generation equipment utilizing vibrations to the floor caused by movement of pedestrians, to promote use of renewable energy.



● Adoption of Paving-Type Solar Panels

(2020-2022 Projects in Cooperation with Tokyo Metropolitan Government)

Solar panels were installed on the pavement on the premises. Power generated in the daytime was stored for use in lighting at night, to promote use of renewable energy.



● Eliminating the Need for Power Supplies for Toilet Remote Controls

We have newly adopted washlet toilets operated by slim, eco-friendly remote controls that do not require an external power supply. Each time a button is pressed—for toilet flushing or washlet functions—electricity is generated, and the remote control operates using this self-generated power.



● Installation of Building-Integrated Photovoltaic (BIPV) Systems

(2023 Projects in Cooperation with Tokyo Metropolitan Government)

Building-integrated photovoltaic (BIPV) systems have been installed within the Tokyo Big Sight premises.

As part of a project aimed at promoting the wider adoption of solar power through enhanced visibility, we cooperated in an initiative that utilizes solar panels integrated into building materials or designed to be integrated by installation onto building materials.



● Automatic Air Conditioning Control Using Array Sensors in the South Exhibition Hall

The South Exhibition Hall has introduced a system that optimizes air conditioning through the use of sensors to improve energy efficiency. By utilizing infrared array sensors, the space is divided into multiple zones, and air conditioning is precisely controlled in response to fluctuations in thermal load in each area. This detailed control eliminates energy loss and has achieved a reduction in electricity consumption of up to 50% compared to conventional systems.



3. Contributing to the Development of Local Communities

Tokyo Big Sight is contributing to improving the value of and further developing coastal areas through our various business activities, by creating lively communities, working in collaboration with nearby businesses, and improving the attractiveness of the community.

SDGs



Our Initiatives

Cooperation with local Businesses

● Participation in the Tokyo Waterfront City Association

Our participation in the Tokyo Waterfront City Association (TWCA) strengthens our ties with nearby businesses through conferences, joint disaster drills, events, and so on. The TWCA conducts Awareness Color Light-ups aimed at aiding social movements and showing a positive message of support.



● Project on “Parasports” (October 2022)

As an activity of TWCA’s environmental project team, we participated in the planning and operation of the Parasports Workshop. With the cooperation of para-athlete Miura Hiroshi, who is our company staff member, parasports related organizations, and local business operators, we held an event where you can experience various parasports.



● CLUB ARIAKE activities

The Ariake Area Management Council was established in 2014 by businesses in Ariake-Minami.

CLUB ARIAKE was launched in January 2019 to provide information promoting the attractiveness of Ariake and making known events being held in the area to employees and students in Ariake-Minami.

※Temporarily out of action



Creation of Prosperity in the Region

● Tokyo International Projection Mapping Award (2016～)

We support this award as a way to discover young spatial video creators and enhance the liveliness of the Ariake area. Each November the walls of the Conference Tower of Tokyo Big Sight are used for showing the works, and a judging panel is held. So far, a total of 120 teams have participated. Award-winning works are put on periodic display, helping to stimulate the liveliness of the local area.



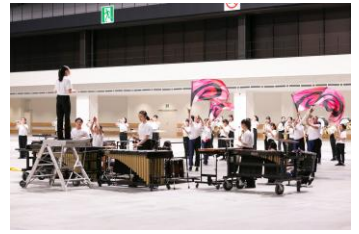
● Projection Mapping at Local Events (2022～)

At “Tokyo Tokyo Delicious Museum” (April 2022) and “ARTBAY TOKYO ART FESTIVAL” (September) held in Tokyo waterfront city, we carried out projection mapping to contribute to the creation of bustle in the Ariake area.



● Community Revitalization through Cooperation with Local Schools and Municipalities

On the occasion of the Ariake GYM-EX opening ceremony, we invited the marching band from local schools for performing. The facility will continue to operate as a community-based facility in cooperation with local residents. In addition, we organize a facility tour for local school children to learn about our facilities and our company.



● SDGs Art Exhibition (September-October 2022)

As a collaborative project with the “ARTBAY TOKYO ART FESTIVAL”, we held the Art Exhibition of Autistic Artist GAKU. Based on the theme of the SDGs, “no one is left behind”, Tokyo Big Sight, a place that welcomes diverse people all over the world, conveyed the importance of recognizing and accepting diversity.



Artist GAKU

● Supporting the Running of ACTIVE KIDS FESTA (2014-2019)

We supported the running of ACTIVE KIDS FESTA, an event centering on the ARIAKE KIDS CUP balance bike competition, to contribute to enlivening Ariake.



● STAND UP SUMMIT (2014-2019)

We held the “STAND UP SUMMIT” recovery aid event together with the Tokyo Metropolitan Government and the NPO Support Our Kids as a way to prevent memories of the Great East Japan Earthquake fading and to foster future generations. The event gathered a total of 1500 students from Tohoku, Tokyo, and other countries to think together about recovery.



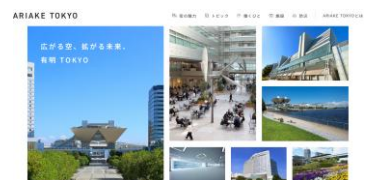
● Opening of the TIME24 Building Cafeteria “SEAGULL” to the Public

The cafeteria “SEAGULL,” located in the TIME24 Building, is open not only to tenant employees but also to the general public. Through this initiative, we are working to create a place for communication and interaction among office workers and residents in the Aomi area.



● Publication of the “ARIAKE TOKYO” Website

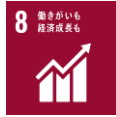
We created and launched the website “ARIAKE TOKYO” to showcase the attractiveness of the Ariake area. Featuring information on the area’s open, nature-rich cityscape, disaster-resilient urban design, and local topics, the site is operated with the goal of helping visitors rediscover Ariake and develop a stronger affinity for the area.



4. Strong and Sound Organizational Structure

Tokyo Big Sight engages in business with a high sense of ethics and awareness of danger, seeking to develop environments where human resources are respected and individuals can fully put their abilities to use, with the aim of building a sound, solid, and resilient organizational structure.

SDGs



Our Initiatives

● Corporate Governance

We are working on improvement of our corporate value by enhancing corporate governance, improving management transparency, ensuring compliance, and promoting risk management. As a good corporate citizen, we will make further efforts to build trusting relationship with our stakeholders.



● Compliance

Based on our internal controls policy, we have established a compliance committee to conduct internal audits on accounts, finances, and service. We hold regular training sessions on compliance for all our employees, to inspire a spirit of compliance.



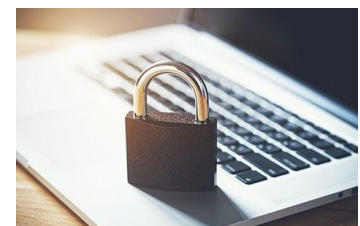
● Strengthening the risk management system

We have established a risk management committee to formulate risk response plans and hold drills based on those plans, to enable us to manage risks by adapting to the changes around our company.



● Promoting Information Systems Security

We took the opportunity afforded by the Tokyo 2020 Olympics to implement security measures for our information systems infrastructure used company-wide. Each year, we regularly hold information security training and drills for targeted attack emails as education and awareness-raising for our employees and take steps to prevent information breaches.



● Occupational health and safety, mental health

We are involved in the Healthy Business Declaration of the Japan Health Insurance Association to achieve health management. Through providing various types of information with the aim of promoting health and enhancing workplace environments for better fitness, we help our employees to stay healthy and lift their satisfaction, resulting in better productivity and a more active organization.



● Promoting a work-life balance

We promote from multiple aspects the development of environments allowing employees to continue working while fully manifesting their own motivation and abilities. By allowing for diverse lifestyles through flexible working hours including staggered shifts and providing a full range of childcare and family care programs, we are actively engaged in ensuring workplaces where each employee can work with an even greater sense of reassurance.



● Developing human resources

As social circumstances and the business environment undergo change, we promote human resources development and enhancement of abilities in order to establish an organization capable of sustainable business growth while achieving our management philosophy and fulfilling our social responsibilities.



● Enhancing a Comfortable Workplace Environment

To create a workplace that employees find comfortable and motivating, we renovated our offices by expanding meeting spaces that encourage communication, adding dedicated areas for online meetings to support paperless work, and increasing multipurpose spaces that employees can flexibly use for work, breaks, and dining.

