



# TOKYO BIG SIGHT ANNUAL REPORT

FY2021

Tokyo Big Sight Inc.

# Company Outline

## Outline (as of June 24, 2022)

Name: Tokyo Big Sight Inc.  
Address: 3-11-1 Ariake, Koto-Ku, Tokyo  
Date of establishment: April 1, 1958  
Capital: ¥5,571 million

## History

March 1956	The Tokyo International Trade Fair Commission was established to host the Tokyo International Trade Fairs and other various trade fairs
April 1958	Tokyo International Trade Center Corp. was established to operate the Harumi Fairgrounds
March 1996	Harumi Fairgrounds were closed
April 1996	Tokyo Big Sight was inaugurated
May 1999	Tokyo International Trade Center Corp. completed the construction and commenced management and operation of the Ariake Park Building
April 2000	Tokyo International Trade Center Corp. integrated business with TOKYO FASHION TOWN CORPORATION and TIME 24 CO., LTD.

## Business Activities

- Management and operation of venues at Tokyo Big Sight (Tokyo International Exhibition Center)
- Holding and operation of trade fairs and exhibitions
- Management and operation of Ariake Park Building, TFT Building, and TIME24 Building

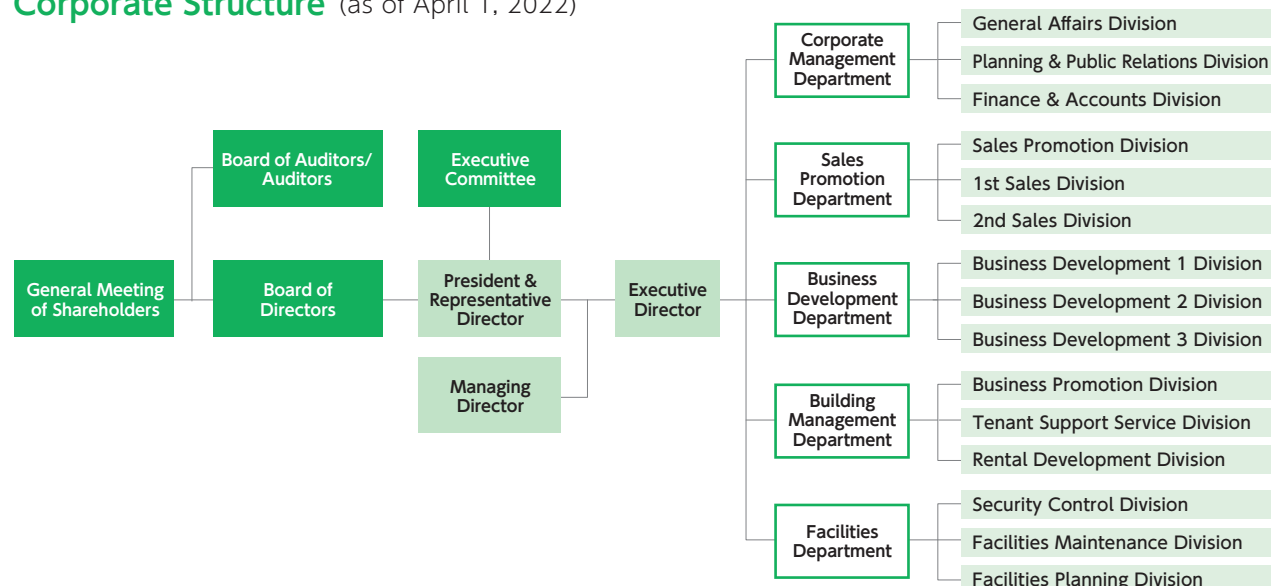
## Management Concept / Management Policy / Action Standards

Management Concept	Contribute to society by promoting economic activities and regional development.
Management Policy	To establish the "Tokyo Big Sight" brand
Action Standards	Let's create "The Encounter of a Lifetime" with a sophisticated flair!

## Executive Officers (as of June 24, 2022)

President & Representative Director	Kiyotsugu Ishihara (Former Director General of the Bureau of Sewerage of Tokyo Metropolitan Government)
Executive Vice President & CEO	Yasuo Tsukuni (Former Director of the Transportation Bureau of the Tokyo Metropolitan)
Executive Managing Director	Yasushi Nakayama
Member of the Board	Haruhiko Kobayashi
Member of the Board	Masahiko Sakamoto
Member of the Board	Kazuo Minami
Member of the Board	Yoshikazu Miyata
Auditor (full time)	Kenji Yamauchi
Auditor	Seiya Shimaoka
Auditor	Takashi Utagawa
Auditor	Hirofumi Yatabe

## Corporate Structure (as of April 1, 2022)



## Stock Information (as of March 31, 2022)

(1) Total number of issued shares	Common stock 2,619,705 shares (including 79,690 shares of treasury stock)
(2) Number of shareholders	116
(3) Major shareholders (top 10)	

Name of Shareholder	Investment status in the Company	
	Number of holdings (shares)	Investment ratio(%)
TOKYO RINKAI HOLDINGS, INC.	1,924,700	75.77
Mitsui Fudosan Co., Ltd.	76,600	3.01
Toshiba Corporation	71,000	2.79
Hitachi, Ltd.	70,000	2.75
Mitsubishi Electric Corporation	60,000	2.36
Employee Stock Ownership Association of Tokyo Big Sight	37,020	1.45
Fuji Electric Co., Ltd.	34,000	1.33
Shimizu Corporation	30,600	1.20
Mizuho Bank, Ltd.	26,180	1.03
Taisei Corporation	20,600	0.81

(Note) The investment ratio is calculated based on the total number of issued shares minus the number of share of treasury stock. Note that the Company holds 79,690 shares of treasury stock, but is excluded from the major shareholders listed above.

## Information on Main Subsidiary

Name of company	Big Sight Services Corporation
Capital	¥60 million
Voting rights ratio of the Company	100%
Main business activities	Services such as cleaning, waste collection, and transport and sale of goods

## Information on Employees (as of March 31, 2022)

Number of employees	113
Increase (decrease) in number of employees compared to end of previous FY	2
Average age	41.0 years old
Average years of service	14.0 years

The number of employees does not include the number of employees stationed at subsidiaries and the number of temporary employees.

## Business Overview (FY2021)

In fiscal year 2021, due to the impact of policy decisions such as the issuing and subsequent extension of the declaration of a state of emergency related to the spread of the COVID-19 pandemic, limits were placed on the number of participants for events and people refrained from domestic and international travel for long periods of time. As a result, it was an extremely difficult year for the MICE industry, which handles international conferences, exhibitions, and similar events. In the midst of this, although our businesses were subject to various limitations, we continued carrying out initiatives aiming to balance COVID-19 infection prevention and economic activities.

In the Venue Operation Business, the International Broadcasting Center (IBC) and Main Press Center (MPC) facilities set up at Tokyo Big Sight were used for the Tokyo 2020 Olympic and Paralympic Games by media personnel from all over the world. After the Paralympic Games ended, exhibition events were

restarted in September, and full-scale utilization of the 116,000m<sup>2</sup> of exhibition spaces was resumed from December, with thorough safety and security measures in place.

In the Exhibition Hosting Business, we hosted events such as the Risk Control Expo "RISCON TOKYO 2021," which features a collection of the latest information and products related to risk management, and Small and Medium Business Market Tokyo 2022.

In the Building Management Business, we increased opportunities for communicating with existing tenants and strengthened our relationships with them while also striving to understand and handle client needs, linking to improved customer satisfaction. In addition, we provided flexible services to meet usage needs, making efforts to increase occupancy rates and secure new tenants.

## Information on Profit / Loss and Property

Category	78th Period FY2018	79th Period FY2019	80th Period FY2020	81st Period FY2021 (fiscal year under review)
Operating revenue (thousand yen)	23,376,546	20,953,419	14,682,969	17,962,636
Ordinary profit (thousand yen)	5,124,226	2,649,449	-441,449	1,833,580
Profit (thousand yen)	3,522,577	1,841,524	-254,777	1,214,789
Earnings per share (yen)	1,360	724	-100.30	478
Total assets (thousand yen)	84,221,093	83,546,303	78,662,299	82,633,237
Net assets (thousand yen)	63,160,086	64,853,477	64,497,099	65,610,288

Note: Earnings (loss) per share is calculated based on the average total number of issued shares during the period, with the average number of shares of treasury stock during the period excluded.

# Balance Sheet (as of March 31, 2022)

## Assets

Accounting Item	Amount	
Current assets		
Cash and deposits		22,833,075
Trade accounts receivable		473,290
Deposits paid		2,100,000
Prepaid expenses		420,084
Other current assets		7,305
Allowance for doubtful accounts		−1,289
Total current assets		25,832,466
Non-current assets		
Property, plant and equipment		
Buildings	63,198,923	
Accumulated depreciation	−29,796,521	33,402,401
Structures	1,629,827	
Accumulated depreciation	−1,103,510	526,317
Vehicles	2,341	
Accumulated depreciation	−2,341	0
Tools, furniture and fixtures	2,488,806	
Accumulated depreciation	−2,359,074	129,731
Land		19,169,527
Lease assets	10,506	
Accumulated depreciation	−9,533	972
Construction in progress		223,685
Total property, plant and equipment		53,452,636
Intangible assets		
Software		122,246
Trademark right		703
Telephone subscription right		4,859
Total intangible assets		127,809
Investments and other assets		
Shares of subsidiaries and associates		200,177
Long-term prepaid expenses		2,777,933
Guarantee deposits and leasehold deposits		242,213
Other		6,485
Allowance for doubtful accounts		−6,485
Total investments and other assets		3,220,325
Total non-current assets		56,800,771
Total assets		82,633,237

## Liabilities

(Unit : thousands of yen)

Accounting Item	Amount	
Current liabilities		
Accounts payable – other		2,788,402
Current portion of long-term borrowings		691,979
Lease obligations		787
Accrued expenses		9,424
Income taxes payable		971,967
Accrued consumption taxes		294,641
Advances received		3,732,497
Deposits received		7,682
Provision for bonuses		68,080
Other current liabilities		135,937
Total current liabilities		8,701,401
Non-current liabilities		
Lease obligations		262
Deferred tax liabilities		2,336,410
Provision for retirement benefits		345,790
Asset retirement obligations		1,249,487
Guarantee deposits and leasehold deposits received		4,389,597
Total non-current liabilities		8,321,548
Total liabilities		17,022,949

## Net Assets

<b>Shareholders' equity</b>		
Share capital		5,571,000
<b>Capital surplus</b>		
Legal capital surplus		3,348,750
<b>Total capital surplus</b>		<b>3,348,750</b>
<b>Retained earnings</b>		
Legal retained earnings		300,000
<b>Other retained earnings</b>		
Reserve for tax purpose reduction entry of non-current assets	13,315,148	
General reserve	40,000,002	
Retained earnings brought forward	3,274,522	56,589,673
<b>Total retained earnings</b>		<b>56,889,673</b>
Treasury shares		-199,135
<b>Total shareholders' equity</b>		<b>65,610,288</b>
<b>Total net assets</b>		<b>65,610,288</b>
<b>Total liabilities and net assets</b>		<b>82,633,237</b>

(Note) Listed amounts are rounded down to the nearest thousand yen.

# Statement of Income (from April 1, 2021 to March 31, 2022)

(Unit: thousands of yen)

Accounting Item	Amount	
Operating revenue		
Venue operation business revenue	10,003,081	
Event business revenue	229,501	
Leasing business revenue	7,371,070	
Other business revenue	358,982	17,962,636
Operating costs		
Cost of sales in venue operation business	8,829,068	
Cost of sales in event business	315,740	
Cost of sales in leasing business	5,256,515	
Cost of sales in other businesses	324,038	14,725,362
Operating gross profit		3,237,273
Selling, general and administrative expenses		1,370,644
Operating profit		1,866,628
Non-operating income		
Interest income	1,317	
Other	3,098	4,415
Non-operating expenses		
Interest expenses	27,499	
Other	9,963	37,463
Ordinary profit		1,833,580
Extraordinary income		
Subsidy received from the government		4,270
Extraordinary losses		
Loss on retirement of non-current assets		239
Profit before income taxes		1,837,611
Income taxes		
Income taxes – current	910,604	
Income taxes – deferred	–287,781	622,822
Profit		1,214,789

(Note) Listed amounts are rounded down to the nearest thousand yen.

## Management and Operation of Tokyo Big Sight

### ◆ Overview

In the period under review, due to the impact of policy decisions such as the issuing and subsequent extension of the declaration of a state of emergency related to the spread of the COVID-19 pandemic, limits were placed on the number of participants for events and people refrained from domestic and international travel for long periods of time. As a result, it was an extremely difficult year for the MICE industry, which handles international conferences, exhibitions, and similar events.

In the midst of this, although our businesses were subject to various limitations, we continued carrying out initiatives aiming to balance COVID-19 infection prevention and economic activities.

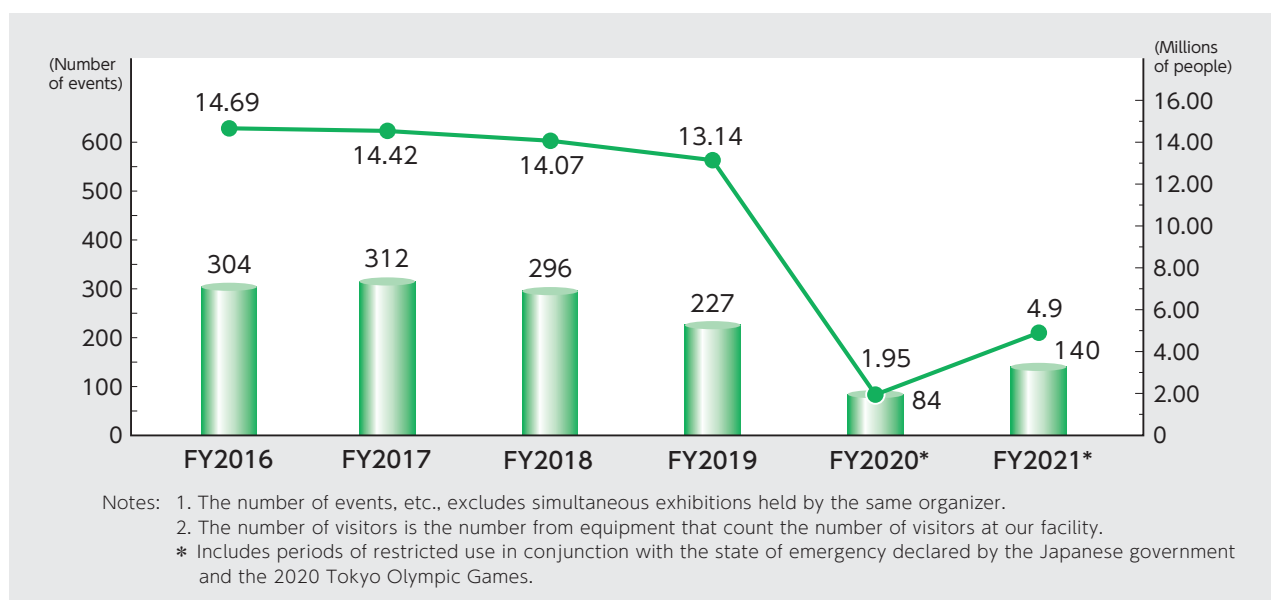


### Outline of Tokyo Big Sight (as of July 2022)

Official name:	Tokyo International Exhibition Center
Address:	3-11-1 Ariake, Koto-ku, Tokyo
Ground-floor area:	265,751 m <sup>2</sup>
Building area:	185,348 m <sup>2</sup>
Total floor area:	316,992 m <sup>2</sup>
Exhibition facilities:	Indoor exhibition area (3 buildings, 16 halls) (Total exhibition area: 115,420 m <sup>2</sup> ) Rooftop exhibition area (6,000 m <sup>2</sup> )
Convention facilities:	International Conference Hall (capacity of 1,000 people) Reception Hall (1,700 m <sup>2</sup> ) Meeting rooms(22 rooms ranging from 35 m <sup>2</sup> to 760 m <sup>2</sup> )

### ◆ Number of Events and Visitors

(as of April 2022)



### ◆ Exhibition Hall Occupancy Rate

Fiscal year	FY2016	FY2017	FY2018	FY2019	FY2020	FY2021
Exhibition hall occupancy rate	73.3%	76.2%	73.9%	69.5%	22.7%	53.5%

## ◆ Year-Long Initiatives

### ● Services

#### • Exhibition hall occupant counting sensor lending services

Starting in December 2021, to assist the hosting of events in the ongoing COVID-19 pandemic, we have launched a lending service for sensor equipment that enable organizers to monitor occupancy of exhibition halls in real-time.

#### • Bottle filling water fountain

As part of our cooperative project with the Tokyo Metropolitan Government Bureau of Waterworks, we have set up a free water fountain in the Atrium of the West Exhibition Halls designed for filling reusable bottles to promote environmentally-friendly lifestyles.



### ● Various Training

#### • Self-defense fire drills, etc.

We held statutory self-defense fire drills twice in the year under review. Additionally, we conducted individual training through Tokyo Big Sight security staff such as training on contacting authorities, training on operating fire extinguishers, and training for dealing with suspicious persons. We also held joint self-defense fire drills with organizers. Through these activities, we worked to improve the safety and security of Tokyo Big Sight.

#### • Joint training for sudden events

On February 25, 2022, under the guidance and cooperation of the Metropolitan Police Department, joint training for sudden events during exhibitions was conducted covering how to deal with suspicious persons and provide evacuation guidance. Facility and event security personnel participated in this joint training session to strengthen coordination and improve their response capability.



### ● Tokyo International Projection Mapping Awards Vol. 6 (November 13, 2021)

With the goals of creating prosperity for the region and discovery and cultivating the next generation of spatial imaging creators, the viewing and final judging for these awards have been carried out at our facility using the wall of the Conference Tower since the first event in 2016. An online format was used this time with no attendees, and it was viewed by 220,000 people, the largest number in the event's history. The next installment of these awards is planned for November 19, 2022.



Awards ceremony



Grand prize winner

## Exhibition Hosting / Operations Business

## ◆ Event Reports

Security & Safety Trade Expo (RISCON TOKYO) 2021 /  
Special Equipment Exhibition and Conference for Anti-Terrorism (SEECAT) 2021

◆ Period: October 20 (Wednesday) - 22 (Friday), 2021

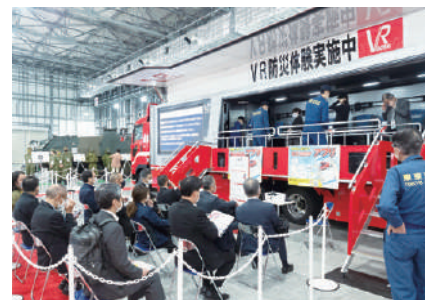
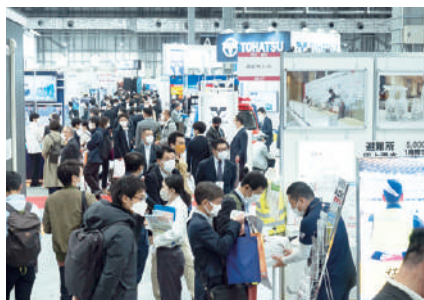
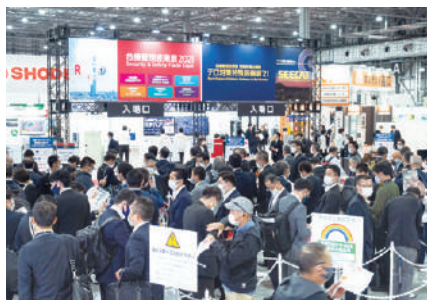
◆ Organizer: Tokyo Big Sight Inc.

Covering topics ranging from disaster prevention and mitigation to security and counter-terrorism, this comprehensive crisis management exhibition was held on the dates above featuring a variety of domestic and international products, technology, services, and information related to crisis management.

In addition to the three main themes of "Disaster Risk Reduction", "Business Risk Management", and "Security", an emergency exhibition on the pressing issue of "Infectious Disease Measures TECH" and an urgent special theme of "Promotion of Digitalization and DX in Crisis Management" were newly established and well-received.

The 15th iteration of the Special Equipment Exhibition and Conference for Anti-Terrorism (SEECAT 2021), the only domestic exhibition with a focus on terrorism, was also held during the same period. These exhibition were held onsite with thorough COVID-19 infection prevention measures for the safety and security of participants.

Exhibition Number	Year Held	Booths	Exhibitors	Registered Visitors
15th	2019	613	390	18,486
16th	2020	345	218	10,609
17th	2021	425	264	11,905



## Chusho Kigyo Market Tokyo 2022

First-time event



◆ Period: Onsite exhibition: January 26 (Wednesday) - 27 (Thursday), 2022

Online exhibition: January 17 (Monday) - 31 (Monday), 2022

◆ Organizer: The Tokyo Chamber of Commerce and Industry

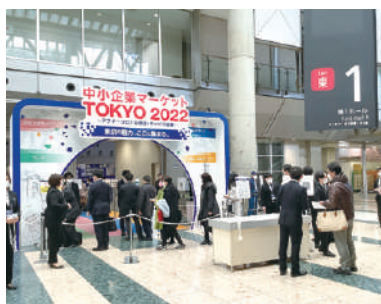
◆ Co-Organizer: Tokyo Big Sight Inc.

Chusho Kigyo Market Tokyo 2022 was held with the theme of "Post-COVID-19" featuring small and medium-sized enterprises (SMEs) in Tokyo appealing their unique technology and products. This gathering of advanced SMEs was divided into four categories: "food", "lifestyles", "manufacturing", and "sightseeing and experience", and it provided new encounters and the development of new sales channels that transcend industry boundaries.

This exhibition was held in a hybrid format, onsite and online exhibitions. At the onsite exhibition, management consultations by buyers and SMEs consultants, and seminars by famous lecturers in each industry were held.

The online exhibition featured exhibitor information, chat function, and video meeting function to provide an environment for productive business meetings without time or location restrictions.

Exhibition Number	Year Held	Booths	Exhibitors	Registered Visitors (onsite)	Registered Visitors (online)
1st	2022	355	293	2,823	3,772



## ◆ Event Announcements

### Security & Safety Trade Expo (RISCON TOKYO) 2022 / Special Equipment Exhibition and Conference for Anti-Terrorism (SEECAT) 2022



- ◇ Period: October 5 (Wednesday) - 7 (Friday), 2022
- ◇ Organizer: Tokyo Big Sight Inc.

The Security & Safety Trade Expo (RISCON TOKYO) is one of the largest comprehensive crisis management themed trade shows in Japan, covering three main themes: "Disaster Risk Reduction", "BCP / Business Risk Management", and "Security". The exhibition features a collection of products and services for handling various issues and risks.

This year, "Risk Control DX / Cyber Security Solution" and "Risk Control Drone Solution" will be added on as new affiliated exhibitions. As categories closely-related to the three main themes of the exhibition, these new affiliated exhibitions will propose new crisis management for pressing issues affecting the business activities of companies, countries, and municipalities, supporting the creation of new business.

In addition, the "Infectious Disease Measures TECH exhibition" will be held once again this year, sharing specialized technology for infectious diseases, a field where new knowledge and countermeasures are in high demand.

### JIMTOF 2022 (The 31st Japan International Machine Tool Fair)



- ◇ Period: November 8 (Tuesday) - 13 (Sunday), 2022
- ◇ Organizer: Japan Machine Tool Builders' Association / Tokyo Big Sight Inc.

One of the largest international technology shows in the world, JIMTOF is a comprehensive trade fair for manufacturing featuring a global gathering of machine tools, various peripheral items, advanced technologies, and products. For JIMTOF 2022, the 60th anniversary of the event, the entirety of the Tokyo Big Sight venue will be used, including the South Exhibition Halls, creating the largest exhibition space in the event's history with a total area of 118,540 m<sup>2</sup>.

On the official website, in addition to the enhanced online catalog functionality which will provide information on exhibitors and their products, new features such as services enabling users to view online seminars and promotional videos will also be included, further elevating the digital content. The South Exhibition Halls will be added to the event for the first time this year, and this space will be used for the "Additive Manufacturing Area in JIMTOF 2022," a special collection of products and technologies related to the trending fields of additive manufacturing (AM) and 3D printing. Pre-registration for this event is scheduled to start in September.

### Tokyo Business Chance Expo (formerly: Chusho Kigyo Market Tokyo 2022)



- ◇ Period: Onsite exhibition: December 14 (Wednesday) - 15 (Thursday), 2022  
Online exhibition: December 5 (Monday) - 19 (Monday), 2022
- ◇ Organizer: The Tokyo Chamber of Commerce and Industry
- ◇ Co-Organizer: Tokyo Big Sight Inc.

Tokyo Business Chance Expo marks a new start for Chusho Kigyo Market Tokyo 2022 held last year with a new name. The theme of this general exhibition is "fusion", and it combines products and services from 11 fields related to the three exhibition zones: "proposals of reintroduction of the attraction of local areas and creating new value", "proposals of safety and security in daily life", and "proposals of productivity enhancement and problem-solving solutions". This exhibition will be held in a hybrid format, onsite exhibition and online exhibition. At the onsite exhibition, in addition to seminars, it will have the exhibitor promotional area, and the latest technology experience area. The online exhibition will be held before the onsite exhibition, providing an opportunity for business meetings to a wide range of visitors, including those from far away.

### Tokyo International Fire and Safety Exhibition 2023 (FIRE-SAFETY TOKYO)



- ◇ Period: June 15 (Thursday) - 18 (Sunday), 2023
- ◇ Organizer: Tokyo Fire Department / Tokyo Big Sight Inc. /  
Tokyo International Fire and Safety Exhibition 2023 Executive Committee

Tokyo International Fire and Safety Exhibition 2023 (FIRE-SAFETY TOKYO) is an international exhibition hosted by Tokyo Fire Department, Tokyo Big Sight Inc., and Tokyo International Fire and Safety Exhibition 2023 Executive Committee featuring a collection of the latest fire-fighting equipment and systems.

The exhibition is held once every five years and was started in 1982 with the objective of improving Tokyo's fire-fighting capabilities. Counting from the "Tokyo Fire Fighting Exhibition" (the naming at the time), this will be the 11th iteration.

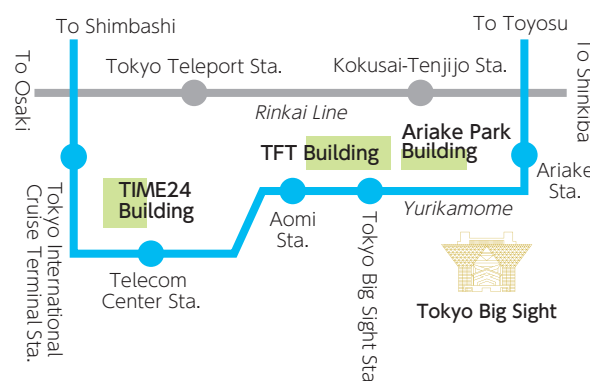
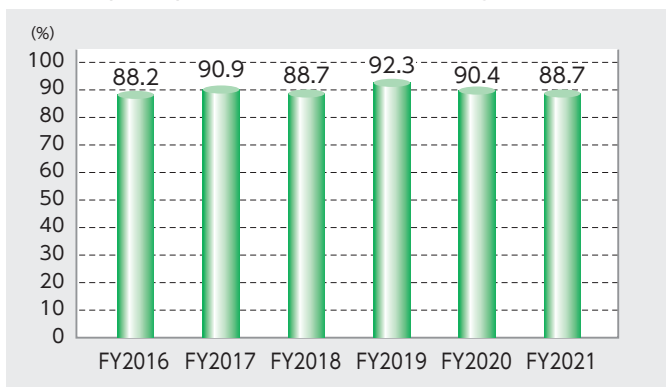
In addition to improving understanding of the risks of various natural disasters by taking lessons from past incidents and elevating awareness of fire and disaster prevention, as well as ability to take action, among Tokyo residents and other groups, the exhibition also strives to strengthen coordination between the three parties of citizens, businesses, and government, in turn promoting related technologies and industries. To achieve these goals, participants ranging from fire department employees and firefighting groups to related personnel, employees of private companies involved in fire prevention, and other end users are invited to attend.

## Building Management Business

### ◆ Overview

In the Building Management Business, we increased opportunities for communicating with existing tenants and strengthened our relationships with them while also striving to understand and handle client needs, linking to improved customer satisfaction. In addition, we provided flexible services to meet usage needs, making efforts to increase occupancy rates and secure new tenants.

### ● Occupancy Rate of Three Buildings



### ● Tokyo Fashion Town (TFT) Building

The TFT Building accommodates approximately 50 companies. Its three halls, conference rooms, and seminar rooms fulfill various needs such as seminars, exhibitions, and parties. The 1st to 3rd floors feature various facilities ranging from restaurants and shops to banks, a post office, clinics, dentists, and a nursery school.



Address: 3-6-11 Ariake, Koto-ku, Tokyo  
 Facilities: Offices, rental halls, rental conference rooms/seminar rooms, shops  
 Ground-floor area: 29,541 m<sup>2</sup>  
 Building area: 23,623 m<sup>2</sup>  
 Total floor area: 162,720 m<sup>2</sup>

Number of floors: Above ground : 9 floors  
 Below ground: 2 floors in West Wing, 1 floor in East Wing  
 Penthouse: 2 floors in West Wing, 2 floors in East Wing  
 Major tenants:  
 YAMADA-DENKI Co., Ltd. Otsuka Kagu Division, Japan Pension Service, etc.

### ● Ariake Park Building

This building is complex of hotels, offices, and commercial facilities. It features the Tokyo Bay Ariake Washington Hotel, widely used by visitors to Tokyo Big Sight, as well as a variety of restaurants.



Address: 3-7-11 Ariake, Koto-ku, Tokyo  
 Facilities: Hotel, shops, and offices  
 Ground-floor area: 9,899 m<sup>2</sup>  
 Building area: 7,712 m<sup>2</sup>  
 Total floor area: 70,113 m<sup>2</sup>

Number of floors:  
 22 floors above ground, 3 floors below ground, 1 penthouse floor  
 Major tenants: Fujita Kanko Inc., etc.

### ● TIME24 Building

Located in the Aomi area, the TIME24 Building is an intelligent building equipped with a BCP generator. In addition to office space created by an expansive non-columnar interior, the building features conference rooms, seminar rooms, and restaurants which can be used to host parties. Tokyo Global Gateway (an English-language village) was held here in September 2018.



Address: 2-4-32 Aomi, Koto-ku, Tokyo  
 Facilities:  
 Offices, rental conference rooms/seminar rooms, shops  
 Ground-floor area: 10,588 m<sup>2</sup>  
 Building area: 4,989 m<sup>2</sup>  
 Total floor area: 66,485 m<sup>2</sup>

Number of floors:  
 19 floors above ground, 1 floor below ground, 2 penthouse floors  
 Major tenants:  
 TOKYO GLOBAL GATEWAY Co., Ltd., Softbank Corporation, etc.

## ◆ Year-Long Initiatives

### ● CS Surveys

We implement regular CS surveys of tenants in each building. Once again in fiscal year 2021, we carried out improvement initiatives based on the results of these surveys. We expanded the lunch space for tenant employees to reduce congestion during lunch hours and also expanded our boxed meal sales. In addition, we established delivery lockers inside the grounds for improved convenience at the TFT Building. These delivery lockers are preferred because no face-to-face meeting is required and the receiving side is able to take packages out at any time, ensuring there will be no missed deliveries.



### ● Ariake Area Management Council Activities

Together with businesses in the Ariake South area, we founded the Ariake Area Management Council in 2014 and are currently running its executive office. Although this council put its activities on hold from March 2020 due to the impact of the COVID-19 pandemic, following a meeting of the persons in charge held in November 2021, activities were restarted. While paying close attention to COVID-19 pandemic conditions, we will continue to consider initiatives for contribution to improving the appeal of the Ariake South area and increasing satisfaction among those who work and study there.



### ● Introduction of Ele-cinema

Ele-cinema is a type of projection media that uses a projector to display images inside of elevators. It was introduced in a portion of the TFT Building elevators in November 2021. The broadcast content includes the latest news, weather reports, commercials, and other information targeted to business persons, as well as notifications from the TFT Building's management (the Company). This technology has eliminated the need for distributing paper flyers and posting information for these notifications, and has also enabled them to reach a larger number of office workers.



### ● Sustainable Christmas Decorations

The Christmas decorations used each year in the TFT Building have been updated. In consideration for the SDGs, we reused flowers planned for disposal in these decorations. An event was held to allow office workers to insert these flowers into the decorations themselves, and on the final day of their display, they were distributed to the office workers to take home. This initiative was carried out with the goal of achieving sustainability that also provides a little bit of happiness to all the office workers.





Tokyo Big Sight



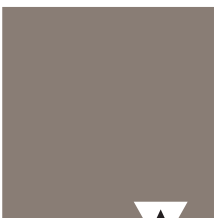
Ariake Park Building



Tokyo Fashion Town (TFT) Building



TIME24 Building



TOKYO BIG SIGHT

## Tokyo Big Sight Inc.

3-11-1 Ariake, Koto-ku, Tokyo 135-0063 Japan  
TEL: +81-3-5530-1111 (main line) FAX: +81-3-5530-1222  
<https://www.bigsight.jp/english/>

(July 2022)